

# Hassocks Infant School

## Child Protection & Safeguarding Policy



★Explore ★Respect ★Flourish

Date policy agreed:	November 2022
Date policy to be reviewed:	September 2023
Responsibility:	Designated Safeguarding Lead To be approved by full governing body

**The Designated Safeguarding Lead in this school is:**

NAME:	Adrian Bates-Holland, Headteacher	From October 2022
	Kamilya Stedman, Deputy Head	From January 2023

**The Deputy Safeguarding Leads in this school are:**

NAME:	Sara Nash, Inclusion Lead	
	Victoria Brewer, Early Years Lead	Until January 2023

**Our Designated Teacher for looked after children is:**

NAME:	Adrian Bates-Holland, Headteacher	From October 2022
	Kamilya Stedman, Deputy Head	From January 2023

**Our Emotional Well-being Lead is:**

NAME:	Sara Nash, Inclusion Lead
-------	---------------------------

# Contents

<b>1</b>	<b>KEY CONTACTS</b>	<b>8</b>
1.1	WEST SUSSEX MULTI-AGENCY INTEGRATED FRONT DOOR (FORMERLY MASH):	8
1.2	REFERRALS TO THE INTEGRATED FRONT DOOR (IFD) FOR CHILDREN AND YOUNG PEOPLE UNDER 18	8
1.3	REFERRALS FOR THOSE AGED 18 AND OVER	8
1.4	LOCAL AUTHORITY DESIGNATED OFFICERS (LADO):	8
1.5	LADO CONTACT DETAILS	9
1.6	SAFEGUARDING IN EDUCATION TEAM	9
<b>2</b>	<b>INTRODUCTION</b>	<b>9</b>
<b>3</b>	<b>SAFEGUARDING CULTURE IN OUR SCHOOL / COLLEGE</b>	<b>10</b>
3.1	CHILD PROTECTION STATEMENT	10
3.2	IT COULD HAPPEN HERE	10
3.3	OUR SCHOOL WILL	10
3.4	VOICE OF THE CHILD – WORKING TOGETHER TO SAFEGUARD CHILDREN 2018	11
3.5	CHILDREN MAY NOT FEEL READY OR KNOW HOW TO TELL.	12
3.6	EXTRA-FAMILIAR ABUSE	12
<b>4</b>	<b>STATUTORY FRAMEWORK</b>	<b>12</b>
4.1	GOVERNMENT LEGISLATION AND GUIDANCE	12
<b>5</b>	<b>CONFIDENTIALITY</b>	<b>13</b>
5.1	OUR SCHOOL WILL:	13
<b>6</b>	<b>RESPONSIBILITIES</b>	<b>14</b>
6.1	OUR SCHOOL	14
6.2	WE WILL	14
6.3	STATUTORY & OTHER RESPONSIBILITIES OF THE GOVERNING BODY	15
6.4	CHILD PROTECTION POLICY & PROCEDURE	17
6.5	ATTENDANCE POLICY & SAFEGUARDING	18
6.6	STAFF BEHAVIOUR POLICY	19
6.7	APPOINTING A DESIGNATED SAFEGUARDING LEAD & DEPUTIES	19
6.8	AUDITS AND REVIEW – INCLUDING PEER REVIEWS	19
6.9	CHILD PROTECTION RECORDS	19
6.10	ALLEGATIONS AGAINST TEACHERS, OTHER STAFF, INCLUDING SUPPLY TEACHERS AND VOLUNTEERS	19
6.11	OTHER AREAS OF NOTE	20
6.12	OUR SCHOOL RECOGNISES THE STATUTORY STATUS OF RELATIONSHIP EDUCATION, RELATIONSHIP AND SEX EDUCATION AND HEALTH EDUCATION FROM SEPTEMBER 2020.	21
6.13	TRAINING –	22
6.14	SAFER RECRUITING	22
6.15	SINGLE CENTRAL RECORD	23
6.16	DISCLOSURE AND BARRING REFERRALS	23
6.17	RESIGNATIONS AND SETTLEMENT AGREEMENTS	23
6.18	CONSIDERATION OF REFERRAL TO THE SECRETARY OF STATE – TEACHING REGULATION AGENCY	24

6.19	ONGOING VIGILANCE	24
6.20	EXISTING STAFF	25
6.21	USE OF SCHOOL PREMISES FOR NON-SCHOOL ACTIVITIES	25
6.22	GOVERNORS AND COMMISSIONERS OF ALTERNATIVE PROVISION	25
6.23	OUR PUPILS ATTENDING ALTERNATIVE PROVISION	26
6.24	CHARITABLE STATUS OF OUR SCHOOL / SETTING	ERROR! BOOKMARK NOT DEFINED.
6.25	PROFESSIONAL DISAGREEMENTS & CONCERNS	26
6.26	WEST SUSSEX SAFEGUARDING CHILDREN PARTNERSHIP	26
<b>7</b>	<b>THE DESIGNATED SAFEGUARDING LEAD (DSL)</b>	<b>27</b>
7.1	THE DESIGNATED SAFEGUARDING LEAD	27
7.2	THE DESIGNATED SAFEGUARDING LEAD IS EXPECTED TO:	28
7.3	TRAINING	29
7.4	DESIGNATED SAFEGUARDING LEAD – CONTINUAL PROFESSIONAL DEVELOPMENT	29
<b>8</b>	<b>WHEN TO BE CONCERNED A CHILD IS AT RISK OF ABUSE</b>	<b>31</b>
8.1	OUR SCHOOL RECOGNISES THAT ALL CHILDREN AND YOUNG PEOPLE ARE VULNERABLE TO ABUSE. 31	
8.2	RECOGNISING PHYSICAL ABUSE	32
8.3	RECOGNISING PERPLEXING CASES WHICH MAY INDICATE A POSSIBILITY OF FABRICATED OR INDUCED ILLNESS (FFI)	35
8.4	RECOGNISING EMOTIONAL ABUSE	35
8.5	RECOGNISING NEGLECT	37
8.6	NEGLECT - USING THE WEST SUSSEX PARTNERSHIP NEGLECT SUITE OF TOOLS	37
8.7	RECOGNISING SEXUAL ABUSE	38
8.8	PREVENTING RADICALISATION	40
8.9	THE PREVENT DUTY	40
8.10	SEXUAL VIOLENCE & HARASSMENT	41
8.11	OUR STAFF WILL RECOGNISE THE IMPORTANCE OF:	42
8.12	PREVENTING CHILD ON CHILD ABUSE	43
<b>8.13</b>	<b>SEXUAL VIOLENCE – RAPE &amp; SEXUAL ASSAULT, INCLUDING BY PENETRATION.</b>	<b>43</b>
<b>8.14</b>	<b>WHAT IS CONSENT?</b>	<b>44</b>
<b>8.15</b>	<b>SEXUAL HARASSMENT</b>	<b>44</b>
<b>8.16</b>	<b>UPSKIRTING</b>	<b>44</b>
8.17	SHARING NUDES AND SEMI-NUDE IMAGES	45
<b>9</b>	<b>CHILDREN REQUIRING MENTAL HEALTH SUPPORT</b>	<b>46</b>
9.1	OUR SCHOOL/COLLEGE HAS AN EMOTIONAL WELL-BEING LEAD AND THAT IS .....	46
9.2	WEST SUSSEX SINGLE POINT OF ACCESS (SPOA)	46
9.3	MAKING A REFERRAL	47
9.4	ADDITIONAL SERVICES	47
9.5	SELF-HARM GUIDANCE FOR SCHOOLS	47
9.6	COVID-19	48
9.7	MENTAL HEALTH AND RE/RSE/HE	48
<b>10</b>	<b>. DEALING WITH A DISCLOSURE OF ABUSE</b>	<b>48</b>
10.1	WE ARE DETERMINED	48

10.2	IF A CHILD DISCLOSES – WE WILL:	48
10.3	WHEN RECORDING INFORMATION, WE WILL:	49
10.4	REPORTING FORMS	49
10.5	SUPPORT FOR STAFF	50
10.6	FEMALE GENITAL MUTILATION (FGM)	50
	<b>LEGAL OBLIGATION TO REPORT ACTS OF FEMALE GENITAL MUTILATION.</b>	50
<b>11</b>	<b>. REFERRING A CHILD TO THE INTEGRATED FRONT DOOR (IFD)</b>	<b>51</b>
11.1	IF A CHILD IS IN IMMEDIATE DANGER THE POLICE MUST BE CALLED BY DIALLING 999.	51
11.2	IF A MEMBER OF STAFF HAS CONCERNS ABOUT A CHILD;	51
11.3	INFORMATION SHARING	51
11.4	TAKING RESPONSIBILITY	54
11.5	EARLY HELP	54
11.6	DEDICATED SCHOOLS TEAMS ARE IN PLACE IN EACH OF THE SIX DISTRICT AREAS ACROSS WEST SUSSEX. THE TEAM WILL OFFER:	54
11.7	TARGETED FAMILY SUPPORT	55
11.8	WEST SUSSEX SAFEGUARDING CHILDREN PARTNERSHIP CONTINUUM OF NEED	55
11.9	FLOWCHART FOR CHILD PROTECTION PROCEDURES FOR SCHOOLS AND COLLEGES	56
<b>12</b>	<b>. RECORD KEEPING</b>	<b>57</b>
12.1	CHILD PROTECTION FILES	57
12.2	WHEN A CHILD MOVES SCHOOL	57
<b>13</b>	<b>. LOCAL AUTHORITY DESIGNATED OFFICER (LADO)</b>	<b>58</b>
13.1	WEST SUSSEX COUNTY COUNCIL DESIGNATED OFFICER (LADO) CONTACT DETAILS	58
13.2	WEST SUSSEX COUNTY COUNCIL DESIGNATED OFFICER SERVICE: GUIDANCE & INFORMATION	58
13.3	THOSE WHO MAY POSE A RISK OF HARM TO CHILDREN AND YOUNG PEOPLE	58
13.4	THE INITIAL RESPONSE TO AN ALLEGATION	59
13.5	INFORMING THE INDIVIDUAL	59
13.6	LADO / CASE MANAGER AND INVESTIGATION	59
13.7	SCHOOL COMPLAINTS	59
13.8	ALLEGATIONS AGAINST MEMBER OF STAFF, INCLUDING SUPPLY STAFF, CONTRACTED STAFF, VOLUNTEERS AND SCHOOL GOVERNORS	60
13.9	NON RECENT ALLEGATIONS	60
13.10	SUPPORTING THOSE INVOLVED	60
13.11	INFORMING PARENTS OR CARERS OF THE CHILD INVOLVED	61
13.12	ALLEGATION'S OUTCOMES	61
13.13	RECORD KEEPING, REFERENCES AND LEARNING LESSONS	61
13.14	CONCERNS THAT DO NOT MEET THE HARM THRESHOLD FOR REFERRAL TO LADO	61
13.15	LOW LEVEL CONCERNS AND STAFF BEHAVIOUR POLICY	62
13.16	WHAT STAFF SHOULD DO IF THEY HAVE CONCERNS ABOUT SAFEGUARDING PRACTICES WITHIN THE SCHOOL OR COLLEGE	63
13.17	WHISTLEBLOWING/CONFIDENTIAL REPORTING	63
<b>14</b>	<b>. SPECIAL EDUCATIONAL NEEDS (SEN) &amp; DISABILITIES</b>	<b>63</b>
14.1	SPECIAL CONSIDERATIONS	63
14.2	SEN & D SUPPORT	64
<b>15</b>	<b>. CHILDREN WHO ARE LESBIAN, GAY, BI, OR TRANS (LGBT)</b>	<b>64</b>

<b>16</b>	<b>. CHILDREN LOOKED AFTER / PREVIOUSLY LOOKED AFTER</b>	<b>64</b>
16.1	DESIGNATED TEACHER FOR LOOKED AFTER CHILDREN	65
16.2	CARE LEAVERS	65
16.3	VIRTUAL SCHOOL HEADS	66
<b>17</b>	<b>CHILDREN POTENTIALLY AT GREATER RISK OF HARM -</b>	<b>66</b>
17.1	AS A SCHOOL WE RECOGNISE CHILDREN MAY NEED A SOCIAL WORKER DUE TO SAFEGUARDING OR WELFARE NEEDS.	66
17.2	AS A SCHOOL WE ARE AWARE	67
<b>18</b>	<b>GUIDEBOOK FOR LOCAL PROTOCOLS TO SAFEGUARD OUR CHILDREN</b>	<b>67</b>
18.1	CHILDREN REQUIRING MENTAL HEALTH SUPPORT	67
18.2	STATUTORY STATUS – RSHE	67
18.3	CRIMES COMMITTED ON SCHOOL PREMISES AND WHEN TO CALL THE POLICE	67
18.4	THE USE OF REASONABLE FORCE IN OUR SCHOOL	67
18.5	ON-LINE SAFETY	67
18.6	OFSTED INSPECTIONS	67
18.7	BOARDING AND RESIDENTIAL SCHOOLS	67
18.8	HOST FAMILIES	67
18.9	PRIVATE FOSTERING	67
18.10	ADDITIONAL SPECIFIC SAFEGUARDING ISSUES:	67
18.11	CHILD ABDUCTION AND COMMUNITY SAFETY INCIDENTS	67
18.12	CHILDREN IN THE COURT SYSTEM CRIMINAL COURT	68
18.13	PRE-TRIAL THERAPY	68
18.14	FAMILY COURT	68
18.15	CHILDREN MISSING EDUCATION	68
18.16	ABSENCE FROM SCHOOL	68
18.17	ELECTIVE HOME EDUCATION	68
18.18	CHILD CRIMINAL EXPLOITATION AND CHILD SEXUAL EXPLOITATION (CSE)	68
18.19	CONCERNS A CHILD IS BEING EXPLOITED	68
18.20	COUNTY LINES	68
18.21	MODERN SLAVERY AND THE NATIONAL REFERRAL MECHANISM	68
18.22	SERIOUS VIOLENCE	68
18.23	CONTEXTUAL SAFEGUARDING NETWORKS	68
18.24	CYBERCRIME	68
18.25	DOMESTIC ABUSE	68
18.26	HOMELESSNESS	68
18.27	SO CALLED HONOUR-BASED VIOLENCE (HBV) – INCLUDING FEMALE GENITAL MUTILATION AND FORCED MARRIAGE	68
18.28	FEMALE GENITAL MUTILATION (FGM)	68
18.29	LEGAL OBLIGATION TO REPORT ACTS OF FEMALE GENITAL MUTILATION.	68
18.30	FORCED MARRIAGE	68
18.31	PREVENTING RADICALISATION & THE PREVENT DUTY	68
18.32	CHANNEL PROGRAMME – FOR THOSE AT RISK OF RADICALISATION	68
18.33	ALLEGATIONS AGAINST OTHER PUPILS WHICH ARE SAFEGUARDING ISSUES	68
18.34	CHILDREN WITH FAMILY MEMBERS IN PRISON	68
18.35	OTHER ASPECTS OF RISK – BULLYING / EMOTIONAL HEALTH & WELL-BEING	69

<b>18.36</b>	<b>SEXUAL VIOLENCE &amp; SEXUAL HARASSMENT</b>	<b>69</b>
<b>18.37</b>	<b>ALLEGATIONS AGAINST STAFF RECORDS</b>	<b>69</b>
<b>18.38</b>	<b>MANAGING PROFESSIONAL DIFFERENCES &amp; CONCERNS</b>	<b>69</b>
<b>18.39</b>	<b>ADULT SAFEGUARDING PROCEDURES</b>	<b>69</b>
<b>18.40</b>	<b>ANNEX 2 – COPY OF ANNEX B KCSIE ROLE OF THE DSL</b>	<b>69</b>
<b>18.41</b>	<b>LIST OF SUGGESTED POLICIES TO SUPPORT SAFEGUARDING</b>	<b>69</b>
<b>18.42</b>	<b>WSCC CHILDREN MISSING EDUCATION POLICY</b>	<b>69</b>
<b>18.43</b>	<b>SPECIMEN CONCERNS RECORDING FORM</b>	<b>69</b>
<b>18.44</b>	<b>SPECIMEN CHRONOLOGY</b>	<b>69</b>
<b>18.45</b>	<b>SKIN / BODY MAP</b>	<b>69</b>
<b>18.46</b>	<b>KCSIE PART FIVE: SEXUAL VIOLENCE &amp; SEXUAL HARASSMENT</b>	<b>69</b>
<b>18.47</b>	<b>WSCC BRIEFING – SEXUAL VIOLENCE AND SEXUAL HARASSMENT BETWEEN CHILDREN IN SCHOOLS AND COLLEGES</b>	<b>69</b>
<b>18.48</b>	<b>FILE SHARING &amp; TRANSFER OF RECORDS FORMS</b>	<b>69</b>

## KEY CONTACTS

### **Designated Safeguarding Lead in our school:**

Adrian Bates-Holland, Headteacher	From October 2022 – January 2023
Kamilya Stedman, Deputy Headteacher	From January 2023

### **Deputy Designated Safeguarding Lead(s):**

Sara Nash, Inclusion Lead	
Victoria Brewer, Early Years Lead	
Adrian Bates-Holland, Headteacher	From January 2023

### **Safeguarding Governor in our school:**

Jo Brumby	From January 2023
-----------	-------------------

### **Designated Teacher for looked after children is:**

Adrian Bates-Holland, Headteacher	From October 2022 – January 2023
Kamilya Stedman, Deputy Headteacher	From January 2023

### **Emotional Well-being Lead**

Sara Nash, Inclusion Lead

#### **1.1 West Sussex Multi-Agency Integrated Front Door (Formerly MASH):**

Tel: 01403 229900  
(Out of Hours – 0330 222 6664)

[WSChildrenservices@westsussex.gov.uk](mailto:WSChildrenservices@westsussex.gov.uk)

#### **1.2 Referrals to the Integrated Front Door (IFD) for children and young people under 18**

Urgent Referrals should be telephoned into IFD on 01403 229900.

If you believe a child is in immediate danger you must call the police on 999.

Referrals to IFD should be made on the following web-based forms which can be accessed <https://www.westsussex.gov.uk/education-children-and-families/keeping-children-safe/raise-a-concern-about-a-child/>

#### **1.3 Referrals for those aged 18 and over**

1. To discuss concerns relating to a person aged 18 and over please contact West Sussex Adult Social Care on 01243 642121.
2. Referral to adult's social care should be made using the [Adult Social Care Referral Form](#) on-line form.

#### **1.4 Local Authority Designated Officers (LADO):**

The LADO's for West Sussex area:

- Miriam WILLIAMS
- Donna TOMLINSON

Assistant LADO:

- Sally ARBUCKLE



## 1.5 LADO Contact Details

LADO should be contacted either by email: [LADO@westsussex.gov.uk](mailto:LADO@westsussex.gov.uk) or by phone, LADO Consultation Contact No. 0330 222 6450 (Mon – Fri 9.00am – 5.00pm)

## 1.6 Safeguarding in Education Team

The Safeguarding in Education Team, including the MASH Education Advisers, can be contacted on 0330 222 4030 or by email to [Safeguarding.Education@westsussex.gov.uk](mailto:Safeguarding.Education@westsussex.gov.uk)

## 2 INTRODUCTION

1. Safeguarding children and child protection applies to all children up to the age of 18.
2. For those aged 18 and over please see part 14 of the schools safeguarding guidebook.
3. **Safeguarding** is the action taken to promote the welfare of children and protect them from harm.
4. **Safeguarding** means:
  - protecting children from maltreatment
  - preventing the impairment of children's mental and physical health or development
  - ensuring that children grow up in circumstances consistent with the provision of safe and effective care, and
  - taking action to enable all children to have the best outcomes.
5. **Child protection is part of the safeguarding process.** It focuses on protecting individual children identified as suffering from, or likely to suffer, significant harm. This includes child protection procedures which detail how to respond to concerns about a child.
6. **We recognise that harm also means where a child or young person witnesses harm to another.**
7. Safeguarding children is everyone's responsibility. Everyone who comes into contact with children and families has a role to play.
8. The purpose of this policy is to inform staff<sup>1</sup>, parents, volunteers and governors about our school's responsibilities for safeguarding children and to enable everyone to have a clear understanding of how these responsibilities should be carried out.
9. We recognise that all adults, including temporary staff, volunteers and governors, have a full and active part to play in protecting children from harm and that the child's welfare is our paramount concern.
10. All staff members believe that our school should provide a caring, positive, safe and stimulating environment that promotes the social, physical and moral development of the individual child.
11. We will also empower and support our staff where they have concerns for the safety of children and young people who do not attend our school / setting.

---

<sup>1</sup> Wherever the word "staff" is used, it covers ALL staff on site, including ancillary and supply staff, and volunteers working with children

### 3 SAFEGUARDING CULTURE IN OUR SCHOOL / COLLEGE

#### 3.1 Child Protection Statement

Hassocks Infant School takes its responsibility to safeguard children extremely seriously and this school will train and empower all staff to recognise and respond effectively to protect a child who may be at risk of significant harm.

#### 3.2 It could happen here

We will ensure that all staff members in our school maintain an attitude of 'it could happen here' and feel able to raise concerns either about a child at risk or a member of staff whose behaviour may present a risk to a child.

#### 3.3 Our school will

1. Have safeguarding at the heart of everything we do.
2. We will maximise opportunities to hear the voice of all of our children and young people and do all we can to understand their lived experience.
3. Maximise opportunities to teach our children / young people how to keep safe both in the real and virtual world.
4. Support the child's development in ways that will foster security, confidence and independence.
5. Provide an environment in which children and young people feel safe, secure, valued, respected and confident.
6. Recognise where children have suffered abuse and neglect, or other potentially traumatic adverse childhood experiences, this can have a lasting impact throughout childhood, adolescence and into adulthood. We also recognise it is key that staff are aware of how these children's experiences, can impact on their mental health, behaviour, and education
7. Ensure that **ALL of our children / young people know a member of staff they can communicate with if they are worried about something.**
8. Where there is a safeguarding concern, governing bodies, proprietors and school or college leaders should ensure the child's wishes and feelings are taken into account when determining what action to take and what services to provide. Systems should be in place for children to express their views and give feedback. Ultimately, all systems and processes should operate with the best interests of the child at heart.
9. Make sure all our staff, including volunteers know how to contact child protection agencies should they need to.
10. Provide a systematic means of monitoring children known or thought to be at risk of harm, and ensure we, the school, contribute to assessments of need and support packages for those children.

11. Emphasise the need for good levels of communication between all members of staff and between the school and other agencies.
12. Have and regularly review, a structured procedure within the school which will be followed by all members of the school community in cases of suspected abuse.
13. Develop and promote effective working relationships with other agencies, especially the Police and Children's Social Care, including Integrated Prevention & Early Help.
14. Part of promoting effective working relationships, we are aware of the requirement for children and young people to have an Appropriate Adult present in certain circumstances involving the police – for example, during searches. We will be aware of Statutory guidance - PACE Code C 2019 – and ensure our children and young people are supported as appropriate.
15. Ensure that all adults, including supply staff, contractors and volunteers, within our school who have access to children have been recruited and checked as to their suitability in accordance with Part 3 of Keeping Children Safe in Education.
16. Have in place, other, up to date policies which support safeguarding - (Please see the schools safeguarding guidebook for a list of suggested policies.)
17. Make sure all staff are aware of the systems within school which support safeguarding. We will explain this on induction together by sharing details of this policy, behaviour policy, staff behaviour policy, the school response to children who go missing from education, and role of the Designated Safeguarding Lead.
18. Whether in respect of child-on-child abuse or any other safeguarding situation, ALL of OUR STAFF will reassure the young person who reports any concerns, that they will be taken seriously and kept safe. OUR STAFF WILL NEVER give a young person the impression they are creating a problem by reporting abuse, sexual violence or sexual harassment nor should a young person ever be made to feel ashamed for making a report.
19. Our staff will also understand that the location of where the incident took place will feature in any risk assessments
20. Our staff will also recognise the need to support siblings of all of those involved in any child-on-child sexual violence or harassment.

### 3.4 Voice of the Child – Working Together to Safeguard Children 2018

Our school recognises the findings in Working Together to Safeguard Children 2018, where children expressed that they wanted an effective safeguarding system to be:

- vigilant: to have adults notice when things are troubling them
- understanding and actioned: to understand what is happening; to be heard and understood; and to have that understanding acted upon
- stable: to be able to develop an ongoing stable relationship of trust with those helping them
- respectful: to be treated with the expectation that they are competent rather than not
- informed and engaged: to be informed about and involved in procedures, decisions, concerns and plans
- explained: to be informed of the outcome of assessments and decisions and reasons when their views have not met with a positive response

- supported: to be provided with support in their own right as well as a member of their family
- advocated: to be provided with advocacy to assist them in putting forward their views
- protective: to be protected against all forms of abuse and discrimination and the right to special protection and help if a refugee

We will use this information to support the training of our staff and review this and other policies as appropriate.

### 3.5 Children may not feel ready or know how to tell.

All our staff should be aware that children may not feel ready or know how to tell someone that they are being abused, exploited, or neglected, and/or they may not recognise their experiences as harmful. For example, children may feel embarrassed, humiliated, or being threatened. This could be due to their vulnerability, disability and/or sexual orientation or language barriers. This should not prevent staff from having a professional curiosity and speaking to the DSL if they have concerns about a child. It is also important that staff determine how best to build trusted relationships with children and young people which facilitate communication.

### 3.6 Extra-familial abuse

All of our staff, but especially the designated safeguarding lead (and deputies) should consider whether children are at risk of abuse or exploitation in situations outside their families. Extra-familial harms take a variety of different forms and children can be vulnerable to multiple harms including (but not limited to) sexual abuse (including harassment and exploitation), domestic abuse in their own intimate relationships (teenage relationship abuse), criminal exploitation, serious youth violence, county lines, and radicalisation

## 4 STATUTORY FRAMEWORK

Our school will act in accordance with the following;

### 4.1 Government legislation and guidance

- The Children Act 1989 <https://www.legislation.gov.uk/ukpga/1989/41/contents>
- The Children Act 2004 <https://www.legislation.gov.uk/ukpga/2004/31/contents>
- Education Act 2002 <https://www.gov.uk/government/publications/relationships-education-relationships-and-sex-education-rse-and-health-education/about-this-guidance>
- Keeping Children Safe in Education 2022 <https://www.gov.uk/government/publications/keeping-children-safe-in-education--2>
- Sexual Violence and sexual harassment between children in schools and colleges 2021: [https://assets.publishing.service.gov.uk/government/uploads/system/uploads/attachment\\_data/file/999239/SVSH\\_2021.pdf](https://assets.publishing.service.gov.uk/government/uploads/system/uploads/attachment_data/file/999239/SVSH_2021.pdf)

- Teaching online safety in school (DfE June 2019)  
[https://assets.publishing.service.gov.uk/government/uploads/system/uploads/attachment\\_data/file/811796/Teaching\\_online\\_safety\\_in\\_school.pdf](https://assets.publishing.service.gov.uk/government/uploads/system/uploads/attachment_data/file/811796/Teaching_online_safety_in_school.pdf)
- Working Together to Safeguard Children 2018:  
<https://www.gov.uk/government/publications/working-together-to-safeguard-children--2>
- Regulated Activity in relation to children: scope  
[https://assets.publishing.service.gov.uk/government/uploads/system/uploads/attachment\\_data/file/550197/Regulated\\_activity\\_in\\_relation\\_to\\_children.pdf](https://assets.publishing.service.gov.uk/government/uploads/system/uploads/attachment_data/file/550197/Regulated_activity_in_relation_to_children.pdf)
- The Education (Child Information) (England) Regulations 2005  
<https://www.legislation.gov.uk/uksi/2005/1437/contents>
- Prevent Duty for England and Wales (2015) under section 26 of the Counter-Terrorism and Security Act 2015  
<https://www.gov.uk/government/publications/prevent-duty-guidance>
- Section 5B of the Female Genital Mutilation Act 2003 (as inserted by section 74 of the Serious Crime Act 2015)  
[https://assets.publishing.service.gov.uk/government/uploads/system/uploads/attachment\\_data/file/573782/FGM\\_Mandatory\\_Reporting\\_-\\_procedural\\_information\\_nov16\\_FINAL.pdf](https://assets.publishing.service.gov.uk/government/uploads/system/uploads/attachment_data/file/573782/FGM_Mandatory_Reporting_-_procedural_information_nov16_FINAL.pdf)
- Dealing with Allegations of Abuse against Teachers and Other Staff (2012)  
<https://www.gov.uk/government/publications/allegations-of-abuse-against-teachers-and-non-teaching-staff>
- Children Missing Education  
[https://assets.publishing.service.gov.uk/government/uploads/system/uploads/attachment\\_data/file/550416/Children\\_Missing\\_Education\\_-\\_statutory\\_guidance.pdf](https://assets.publishing.service.gov.uk/government/uploads/system/uploads/attachment_data/file/550416/Children_Missing_Education_-_statutory_guidance.pdf)
- West Sussex Safeguarding Children Partnership and Pan-Sussex safeguarding procedures [West Sussex Safeguarding Children Partnership](#)
- The Right to Choose – what services and organisations should do to help people at risk of forced marriage. <https://www.gov.uk/government/publications/the-right-to-choose-government-guidance-on-forced-marriage/multi-agency-statutory-guidance-for-dealing-with-forced-marriage-and-multi-agency-practice-guidelines-handling-cases-of-forced-marriage-accessible>
- Searching, screening and confiscation  
[https://assets.publishing.service.gov.uk/government/uploads/system/uploads/attachment\\_data/file/674416/Searching\\_screening\\_and\\_confiscation.pdf](https://assets.publishing.service.gov.uk/government/uploads/system/uploads/attachment_data/file/674416/Searching_screening_and_confiscation.pdf)
- The Equality Act 2010 and schools  
<https://www.gov.uk/government/publications/equality-act-2010-advice-for-schools> & <https://www.equalityhumanrights.com/en/advice-and-guidance/public-sector-equality-duty>

## 5 CONFIDENTIALITY

### 5.1 Our School Will:

1. As a general principle, all matters relating to child protection are confidential and should only be shared on a 'need-to-know' basis.
2. The Headteacher or Designated Safeguarding Lead will disclose any child protection related information about a child to other members of staff on a need-to-know basis only, where the receiving member of staff can play an active role in safeguarding that child or supporting their education outcomes.
3. All staff must be aware that they have a professional responsibility to share information with other agencies in order to safeguard children.

4. All staff must be aware that they cannot promise a child to keep secrets if doing so might compromise that or another child's safety or wellbeing.
5. The intention to refer a child to Children's Social Care will be shared with parents/carers unless to do so could put the child at greater risk of harm or impede a criminal investigation. If in doubt, advice should be sought from the Integrated Front Door.
6. KCSiE very clearly outlines the expectations on our Designated Safeguarding Lead (DSL) in promoting the educational outcomes for children by sharing information about the welfare, safeguarding and child protection issues that children, including children with a social worker, are experiencing, or have experienced. Our school will follow this guidance.
  - a) KCSiE outlines that the DSL will share information with staff, so they know who these children are, understand their academic progress and attainment and maintain a culture of high aspirations for this cohort. Our school will support teaching staff to identify the challenges that children in this group might face and the additional academic support and adjustments that they could make to best support these children.
  - b) Our school will approach sharing of such information sensitively, in collaboration with the child or young person, parents and carers. When supporting the educational outcomes for a child staff may need to know that the child is or has been supported by safeguarding agencies, but it will often not be necessary to share the details of the actual safeguarding concerns.

## 6 RESPONSIBILITIES

### 6.1 Our School

As a school we recognise staff have a vital role to play in safeguarding children because staff can identify concerns early, provide help for children, and prevent these concerns escalating. We also recognise that ALL staff have a responsibility to provide a safe environment in which children can learn.

### 6.2 We will

1. Ask our children what they want from an effective child protection system.
2. Establish and maintain an environment where children feel secure, are encouraged to talk and are listened to.
3. Be aware of the signs of abuse and maintain an attitude of "it could happen here" with regards to child protection.
4. Ensure that children know that there are adults in the school whom they can approach if they are worried about anything, whether in school, at home, or in general.
5. That all ensure all staff will know what to do if a child tells them they are being abused or neglected.

6. Ensure that all staff will know how and where to record their concerns and report these to the Designated Safeguarding Lead, as soon as possible.
7. If a child is in immediate danger, know how to refer the matter to the Integrated Front Door and/or the police immediately.
8. Support pupils in line with their Child Protection Plan and notify the Designated Safeguarding Lead of any child on a Child Protection Plan who has an unexplained absence.
9. Actively plan opportunities within the curriculum for children to develop the skills they need to assess and manage risk appropriately and keep themselves safe.
10. Be aware of and follow the [Sussex Child Protection & Safeguarding Procedures](#), produced by West Sussex, East Sussex, and Brighton & Hove. This will include the referral process.
11. Have **read and understand Part 1 of Keeping Children Safe in Education September 2022** (or for staff not working directly with children, the condensed version of part 1 found at Annex A of KCSiE) and be alert to signs of abuse and know to whom they should report any concerns or suspicions.
12. Participate in safeguarding training as part of our induction process.
13. Ensure all staff receive safeguarding and child protection updates as required, **but at least annually**, to provide them with relevant skills and knowledge to safeguard children.
14. Ensure that they know who the Designated and Deputy Safeguarding Lead(s) is/are and how to contact them.
15. Be aware of the 'early help' process and understand their role in it. This includes identifying problems and working effectively with other agencies that provide support to pupils.
16. Immediately refer to the Headteacher if they have concerns about another member of staff.
17. Immediately refer to the Chair of Governors and/or the Local Authority Designated Officer where the concerns are about the Headteacher.
18. That all staff, including volunteers, will, where a child is suffering, or is likely to suffer from harm, recognise it is important that a referral to local authority children's social care (and if appropriate the police) is made immediately. Referrals should follow the local referral process.

### 6.3 Statutory & Other Responsibilities of the Governing Body

1. The nominated Governor for Child Protection in this school is: Jo Brumby.
2. The Governing Body takes seriously its responsibility to safeguard and promote the welfare of children in its care and to work together with other agencies to ensure adequate arrangements within our school to identify, assess, and support children who are, or who may be, suffering harm.



3. We as a governing body recognise, as outlined at para 81 KCSiE 2022, that governing bodies and proprietors should ensure that all governors and trustees receive appropriate safeguarding and child protection (including online) training at induction. This training should equip them with the knowledge to provide strategic challenge to test and assure themselves that the safeguarding policies and procedures in place in schools and colleges are effective and support the delivery of a robust whole school approach to safeguarding. Their training should be regularly updated.
4. As a governing body we are aware of our obligations under the Human Rights Act 1998, the Equality Act 2010, (including the Public Sector Equality Duty, and their local multi-agency safeguarding arrangements.
5. As a governing body we recognise The Human Rights Act 1998 (HRA) sets out the fundamental rights and freedoms that everyone in the UK is entitled to and contains the Articles and protocols of the European Convention on Human Rights (ECHR) (the Convention) that are deemed to apply in the UK. It compels public organisations to respect and protect an individual's human rights when they make individual decisions about them.
6. We recognise, under the HRA, it is unlawful for schools and colleges to act in a way that is incompatible with the Convention. The specific convention rights applying to schools and colleges are:
  - a) Article 3: the right to freedom from inhuman and degrading treatment (an absolute right)
  - b) Article 8: the right to respect for private and family life (a qualified right) includes a duty to protect individuals' physical and psychological integrity
  - c) Article 14: requires that all of the rights and freedoms set out in the Act must be protected and applied without discrimination, and
  - d) Protocol 1, Article 2: protects the right to education.
7. As a governing body we recognise being subjected to harassment, violence and or abuse, including that of a sexual nature, may breach any or all of these rights, depending on the nature of the conduct and the circumstances.
8. As a governing body we recognise schools and colleges have obligations under the Equality Act 2010.
9. According to the Equality Act, schools and colleges must not unlawfully discriminate against pupils because of their sex, race, disability, religion or belief, gender reassignment, pregnancy and maternity, or sexual orientation (protected characteristics).
10. Whilst all of the above protections are important, in the context of safeguarding, this guidance, and the legal duties placed on schools and colleges in relation to safeguarding and promoting the welfare of children, governing bodies and proprietors should carefully consider how they are supporting their pupils and students with regard to particular protected characteristics - including disability, sex, sexual orientation, gender reassignment and race.
11. Provisions within the Equality Act allow schools and colleges to take positive action, where it can be shown that it is proportionate, to deal with particular disadvantages affecting pupils or students with a particular protected characteristic in order to meet their specific need, this includes a duty to make reasonable adjustments for disabled children and young people, including those with long term conditions. A school or college, could, for example, consider taking positive action to support



girls if there was evidence they were being disproportionately subjected to sexual violence or sexual harassment.

12. Guidance to help schools understand how the Equality Act affects them and how to fulfil their duties under the act can be found at section 4 above.
13. The Public Sector Equality Duty (PSED) is found in the Equality Act. Compliance with the PSED is a legal requirement for state-funded schools and colleges, advice on this – including on specific duties, is set out in the advice linked in paragraph 90 of KCSiE 2022.
14. The PSED places a general duty on schools and colleges to have, in the exercise of their functions, due regard to the need to eliminate unlawful discrimination, harassment and victimisation (and any other conduct prohibited under the Equality Act), to advance equality of opportunity and foster good relations between those who share a relevant protected characteristic and those who do not. The duty applies to all protected characteristics (see para 87 of KCSiE) and means that whenever significant decisions are being made or policies developed, specific consideration must be given to the equality implications of these such as, for example, the need to eliminate unlawful behaviours that relate to them such as sexual violence and sexual harassment, misogyny/misandry and racism.
15. We recognise that this is just one reason why good record-keeping and monitoring of all forms of abuse and harassment is essential and we will as a governing body decide on how we monitor this.
16. We recognise the PSED helps schools and colleges (which are subject to it) to focus on key issues of concern and how to improve pupil and student outcomes. Some pupils or students may be more at risk of harm from specific issues such as sexual violence, homophobic, biphobic or transphobic bullying or racial discrimination. Such concerns will differ between education settings, but we recognise it is important to be conscious of disproportionate vulnerabilities and integrate this into their safeguarding policies and procedures.
17. Keeping Children Safe in Education 2022 makes clear that governing bodies and proprietors should have a senior board level or equivalent lead to take **leadership** responsibility for their schools or colleges safeguarding arrangements and to ensure there are appropriate policies and procedures relevant to their particular setting.
18. As a governing body we will facilitate a whole school approach to safeguarding. As a governing body we will decide how we facilitate that approach and ensure that all our systems, policies and procedures operate with the best interests of children at their heart.
19. We will ensure that our child protection policy reflects our whole school approach to child-on-child abuse, and we will ensure that ALL members of staff are aware of their specific roles and responsibilities.
20. We will ensure all of our policies and procedures reflect the guidance within KCSiE 2022. In addition, we will ensure we have appropriate policies and procedures in place that enable all staff to respond effectively to safeguarding concerns tailored to the specific needs of our school / setting.

#### 6.4 Child Protection Policy & Procedure

1. We will make sure the safeguarding policies & procedures in the school are always effective and comply with the law. This will include a Child Protection Policy which is reviewed at least annually and is made available publicly, either on-line or by other means.
2. We will make sure our child protection policy:
  - Reflects the whole school approach to child-on-child abuse reflects reporting systems
  - Describes procedures which are in accordance with government guidance;
  - Refers to locally agreed multi-agency safeguarding arrangements put in place by the safeguarding partners; (And use the WSCC schools safeguarding guidebook, 2022/23, to assist our school respond to concerns within the local context.)
  - Includes policies as reflected elsewhere in Part two of KCSiE 2022 where appropriate, reflects serious violence.
  - Is reviewed annually (as a minimum) and updated if needed, so that it is kept up to date with safeguarding issues as they emerge and evolve, including lessons learnt;

## 6.5 Attendance Policy & Safeguarding

1. A policy which puts in place appropriate safeguarding responses to children who do not attend or go missing during the school day or who are children missing education, particularly on repeat occasions, to help identify the risk of abuse and neglect, including sexual abuse or exploitation, and to help prevent the risk of them going missing in future.
2. Where reasonably possible, our school will hold more than one emergency contact number for each pupil or student. This goes beyond the legal minimum, but we recognise that it is good practice for our school to have additional options to make contact with a responsible adult when a child goes missing from education, or who does not attend or goes missing from school, is also identified as a welfare and/or safeguarding concern.<sup>2 3</sup>
3. Our school will always take immediate steps to safeguard a vulnerable child. For example, an inability to make contact with a parent / carer despite immediate and repeated efforts will not impede urgent safeguarding action, for example calling the police for a child who is at risk and has gone missing during the school day.
4. Ensuring we follow the correct procedures outlined in this policy when removing a pupil from roll, or adding a pupil to our roll, at non-standard transition points.<sup>45</sup>

---

<sup>2</sup> DfE school attendance guidance can be found <https://www.gov.uk/government/publications/school-attendance>

<sup>3</sup> WSCC school absence information can be found <https://www.westsussex.gov.uk/education-children-and-families/schools-and-colleges/school-attendance-and-behaviour/school-absences/>

<sup>4</sup> DfE guidance Children Missing Education found <https://www.gov.uk/government/publications/children-missing-education>

<sup>5</sup> WSCC Children Missing Education and Removal from Roll Policy  
[https://www.westsussex.gov.uk/media/12459/cme\\_policy.pdf](https://www.westsussex.gov.uk/media/12459/cme_policy.pdf)

## 6.6 Staff Behaviour Policy

1. We will have in place a Staff Behaviour Policy (sometimes called a Code of Conduct) which should, amongst other things, include acceptable use of technologies staff/pupil relationships and communications including the use of social media.
2. This will include how school manage low level concerns.

## 6.7 Appointing a Designated Safeguarding Lead & Deputies

1. Appointing a Designated Safeguarding Lead who is a senior member of staff from **our leadership team**, who has responsibility for safeguarding and child protection. This should be explicit in the role-holders job description in line with Annex C of Keeping Children Safe in Education 2022.

## 6.8 Audits and Review – including Peer Reviews

1. Through regular review and audit, ensure that any safeguarding deficiencies or weaknesses within the school are remedied without delay.<sup>6</sup>
2. Our school will also consider whether a peer review by another school or an audit of our safeguarding provision would be of benefit.<sup>7</sup>

## 6.9 Child Protection Records

Ensuring that child protection records are maintained in accordance with KCSiE 2022, are kept securely and separately from other records, in accordance with GDPR, and are only accessed by staff that need to.

## 6.10 Allegations against teachers, other staff, including supply teachers and volunteers

1. As a Governing Body we are aware of our duties under Part Three and Part Four, Keeping Children Safe in Education 2022 – safer recruiting and managing allegations made against teachers, other staff, including supply teachers and volunteers.
2. As a Governing Body we aware of the new guidance within KCSiE regarding low level concerns.
3. We recognise that our duties relate to members of staff, supply staff and volunteers who are currently working in any school or college regardless of whether the school or college is where the alleged abuse took place.
4. We are aware of our responsibilities in respect of supply teachers, as outlined in part 3 of Keeping Children Safe in Education 2022.

---

<sup>6</sup> The NSPCC / TES safeguarding self-assessment is regarded by the Local authority as a useful tool for this purpose <https://www.nspcc.org.uk/services-and-resources/working-with-schools/esat/>

<sup>7</sup> WSCC Safeguarding in Education Team [safeguardng.education@westssussex.gov.uk](mailto:safeguardng.education@westssussex.gov.uk) can provide further advice and assistance in these areas.

5. We are aware that allegations against a teacher who is no longer teaching should be referred to the police. Historical allegations of abuse should also be referred to the police.
6. We will ensure that there are procedures in place to effectively manage allegations against all staff members, including low level concerns.
7. We will train our staff to enable them to raise concerns and, as a school, we will follow the guidelines outlined in Part 4 of Keeping Children Safe in Education 2022.
8. Our school will refer cases to the Local Authority Designated Officer (LADO) where a member of staff, supply or agency staff or volunteer has, either inside or outside of school:
  - i. behaved in a way that has harmed a child, or may have harmed a child;
  - ii. possibly committed a criminal offence against or related to a child;
  - iii. behaved towards a child or children in a way that indicates he or she may pose a risk of harm to children; or
  - iv. behaved or may have behaved in a way that indicates they may not be suitable to work with children.
9. All such cases, and in cases of any doubt as to whether the matter reaches threshold for an allegation, advice and guidance must be sought from the LADO BEFORE any internal investigation begins.
10. For further information on how we will respond to any such allegations see section 13 below.

#### 6.11 Other areas of note

1. Ensuring that we discharge our responsibilities as a Governing Body in respect of adhering to the reporting restrictions imposed by the Education Act 2002 where teachers are under investigation.
2. As a Governing Body we will also ensure parents and carers are aware of their responsibilities not to publish any information during such investigations as highlighted in paragraph 388 of Keeping Children Safe in Education 2022 and section 141F of the Education Act 2002.
3. Recognising that neither the Governing Body, nor individual Governors, have a role in pursuing or managing the processes associated with individual cases of child protection.
4. Recognising that neither the Governing Body, nor individual Governors, have a right to know details of such cases, except when exercising their disciplinary functions in respect of allegations against staff.
5. Making sure all staff are familiar with the contents of Part 1 or Annex A of Keeping Children Safe in Education 2022 and that all staff have been trained appropriately, frequently and in line with statutory guidance.
6. By making sure any staff training includes how local services work together to safeguard children and how our school safeguarding leads and deputies work with

the safeguarding partnership and other agencies as outlined in Working Together to Safeguard Children<sup>8</sup> to keep children safe.

7. Ensuring that the school is contributing to inter-agency working, which includes engaging with our local Early Help hub in a coordinated manner to provide support to our children as soon as needs are identified.
8. Appointing a Designated Teacher for Children Looked After, recognising and reflecting in school procedures and this policy that children looked after are particularly vulnerable.
9. When considering our responsibility to safeguard and promote the welfare of children and provide them with a safe environment in which to learn, we recognise governing bodies and proprietors should be doing all that they reasonably can to limit children's exposure to the above risks from the school's IT system. As part of this process, governing bodies and proprietors should ensure their school has appropriate filters and monitoring systems in place and regularly review their effectiveness. They should ensure that the leadership team and relevant staff have an awareness and understanding of the provisions in place and manage them effectively and know how to escalate concerns when identified. Governing bodies and proprietors should consider the age range of their children, the number of children, how often they access the IT system and the proportionality of costs verses safeguarding risks.
10. For e-learning, making sure that appropriate filters and appropriate monitoring systems are in place to safeguard against potentially harmful and inappropriate online material.
11. By working with parents and carers in making sure that appropriate filters and appropriate monitoring systems are in place whilst the children are accessing the internet at home, to safeguard against potentially harmful and inappropriate online material.

#### **6.12 Our school recognises the statutory status of Relationship Education, Relationship and Sex Education and Health Education from September 2020.**

1. As governors we welcome this along with the opportunity to teach our children about safeguarding including online, through teaching and learning opportunities and as part of providing a universal broad and balanced curriculum.
2. As a Governing Body we recognise the advice at pages 33 / 34 of KCSiE 2022 regarding the opportunities to teach safeguarding and in particular:
  - a. Governing bodies and proprietors should ensure that children are taught about how to keep themselves and others safe, including online. It should be recognised that effective education will be tailored to the specific needs and vulnerabilities of individual children, including children who are victims of abuse, and children with special educational needs or disabilities.
  - b. In schools, relevant topics will be included within Relationships Education (for all primary pupils), and Relationships and Sex Education (for all secondary pupils) and Health Education (for all primary and secondary pupils). In teaching these subjects

---

<sup>8</sup> Working Together to Safeguard Children 2018 – found [HERE](#)

schools must have regard to the statutory guidance,<sup>36</sup> which can be found here. Colleges may cover relevant issues through tutorials.

- c. Schools play a crucial role in preventative education. Preventative education is most effective in the context of a whole-school or college approach that prepares pupils and students for life in modern Britain and creates a culture of zero tolerance for sexism, misogyny/misandry, homophobia, biphobic and sexual violence/harassment. The school will have a clear set of values and standards, upheld and demonstrated throughout all aspects of school life. These will be underpinned by the school's behaviour policy and pastoral support system, as well as by a planned programme of evidence based RSHE delivered in regularly timetabled lessons and reinforced throughout the whole curriculum. Such a programme should be fully inclusive and developed to be age and stage of development appropriate (especially when considering the needs of children with SEND and other vulnerabilities). This program will tackle at an age-appropriate stages issues such as:
- i. healthy and respectful relationships
  - ii. boundaries and consent
  - iii. stereotyping, prejudice and equality
  - iv. body confidence and self-esteem
  - v. how to recognise an abusive relationship, including coercive and controlling behaviour
  - vi. the concepts of, and laws relating to- sexual consent, sexual exploitation, abuse, grooming, coercion, harassment, rape, domestic abuse, so called honour-based violence such as forced marriage and Female Genital Mutilation (FGM), and how to access support, and
  - vii. what constitutes sexual harassment and sexual violence and why these are always unacceptable.

### 6.13 Training –

1. Governors will ensure they and all school staff, including volunteers, are trained at least annually in respect of safeguarding. Governors will also consider what other bespoke training, for example PREVENT, would enable them to fulfil their governance obligations.

### 6.14 Safer Recruiting

1. As a Governing Body, we will ensure the school creates a culture of safer recruitment and as part of that adopt recruitment procedures that help deter, reject or identify people who might abuse children.
2. Our school will follow the procedures set out in Part 3: Safer Recruitment. Keeping Children Safe in Education, September 2022. This includes ensuring taking up references for each shortlisted candidate **before** interview and ensuring that at least one member of any appointing panel, including at shortlisting, will have attended safer recruitment training.
3. We recognise that it is good practice to record the details of the member of staff who is safer recruitment trained within the selection process to enable subsequent audit / scrutiny.
4. We will take advice from human resources / legal services where necessary.

### 6.15 Single Central Record

1. We will ensure that our school maintains a single central record in line with Part 3, of Keeping Children Safe in Education 2022.
2. We will remind all staff, at least annually, that they must, straightaway, bring to the attention of the headteacher any material changes in circumstances or other information of relevance.
3. For supply teachers, we are aware that we must obtain written notification from any agency, or third-party organisation who we are using, that the organisation has carried out the checks (in respect of the enhanced DBS certificate, written notification that confirms the certificate has been obtained by either the employment business or another such business), on an individual who will be working at our school.
4. Where any supply position requires a barred list check, we recognise that this must be obtained by the agency or third party prior to our school appointing the individual.
5. We are aware of the checks that must be undertaken for trainee or student teachers, and will make sure, depending on circumstances, that either the school or training provider will undertake all relevant checks.
6. Our school will always check that the person presenting themselves for work from a supply or other agency is the same person on whom the checks have been made.
7. IF THERE IS ANY DOUBT THAT ALL RELEVANT CHECKS HAVE NOT BEEN COMPLETED THEN THE PERSON WHOM THE CHECKS RELATE TO WILL NOT BE ALLOWED TO ENGAGE IN ANY REGULATED ACTIVITY AT OUR SCHOOL.

### 6.16 Disclosure and Barring Referrals

1. We recognise that our school has a legal duty in making a referral <https://www.gov.uk/guidance/making-barring-referrals-to-the-dbs> regarding anyone who has harmed, or poses a risk of harm, to a child or vulnerable adult where:
  - a. The harm test is satisfied in respect of that individual.
  - b. The individual has received a caution or conviction for a relevant offence, or if there is reason to believe that the individual has committed a listed relevant offence; and
  - c. The individual has been removed from working (paid or unpaid) in regulated activity or would have been removed had they not left.
2. We recognise that this is a legal duty for our school and failure to refer when the criteria are met is a criminal offence.

### 6.17 Resignations and Settlement Agreements

1. Our school recognises that IF the accused person resigns, or ceases to provide their services, this should not prevent an allegation being followed up in accordance with this policy and the guidance contained in Part Four of KCSiE 2022.



2. A referral to the DBS must be made if the criteria are met - see above and Part Four of KCSiE 2022.
3. We also recognise we must also consider whether a referral to the Secretary of State, through a referral to the Teacher Regulation Authority <https://www.gov.uk/guidance/teacher-misconduct-referring-a-case> as appropriate.
4. If the accused person resigns or their services cease to be used and the criteria are met for a referral to DBS it will not be appropriate to reach a settlement/compromise agreement. We recognise that any settlement/compromise agreement that would prevent a school from making a DBS referral even though the criteria for referral are met, is likely to result in a criminal offence being committed. This is because the school would not be complying with its legal duty to make the referral.
5. As a Governing Body, we recognise it is important that every effort is made to reach a conclusion in all cases of allegations bearing on the safety or welfare of children, including any in which the person concerned refuses to cooperate with the process. Wherever possible, the accused should be given a full opportunity to answer the allegation and make representations about it. But the process of recording the allegation and any supporting evidence and reaching a judgement about whether it can be substantiated based on all the information available, should continue even if that cannot be done or the accused does not cooperate. It may be difficult to reach a conclusion in those circumstances, and it may not be possible to apply any disciplinary sanctions if a person's period of notice expires before the process is complete, but it is important to reach and record a conclusion wherever possible.
6. 'Settlement agreements' (sometimes referred to as compromise agreements), by which a person agrees to resign if the employer agrees not to pursue disciplinary action, and both parties agree a form of words to be used in any future reference, should not be used in cases of refusal to cooperate or resignation before the person's notice period expires. Such an agreement will not prevent a thorough police investigation where that is appropriate.
7. We will take advice from Human Resources/Legal Services where necessary.

#### 6.18 Consideration of referral to the Secretary of State – Teaching Regulation Agency

1. We recognise that in any case concerning the dismissal or where we cease to use the services of a teacher because of serious misconduct or might have dismissed them or ceased to use their services had they not left first, we must consider whether to refer the case to the Secretary of State (via the Teaching Regulation Agency). Details about how to make a referral to the Teaching Regulation Agency can be found on <https://www.gov.uk/guidance/teacher-misconduct-referring-a-case>
2. We will take advice from Human Resources/Legal Services where necessary

#### 6.19 Ongoing vigilance

1. We recognise that as a governing body, we should ensure we have processes in place for continuous vigilance, maintaining an environment that deters and prevents abuse and challenges inappropriate behaviour.



2. To support this, it is important that school leaders create the right culture and environment so that staff feel comfortable to discuss matters both within, and where it is appropriate, outside of the workplace, which may have implications for the safeguarding of children. This can assist employers to support staff, where there is a need, and help them manage children's safety and welfare, potentially providing them with information that will help them consider whether there are further measures or changes to procedures that need to be put in place to safeguard children in their care.

## 6.20 Existing staff

1. There are limited circumstances where schools will need to carry out new checks on existing staff. These are when:
  - a. an individual working at the school moves from a post that was not regulated activity with children into work which is considered to be regulated activity with children. In such circumstances, the relevant checks for that regulated activity **must** be carried out.
  - b. there has been a break in service of 12 weeks or more; or
  - c. there are concerns about an individual's suitability to work with children.
2. For colleges, an individual moving from a position that did not involve the provision of education to one that does, **must** be treated as if that individual were a new member of staff and all required pre-appointment checks **must** be carried out.

## 6.21 Use of school premises for non-school activities

1. We recognise that the hire or rent out of school facilities/premises to organisations or individuals (for example to community groups, sports associations, and service providers to run community or extra-curricular activities) we as a governing body should ensure that appropriate arrangements are in place to keep children safe.
2. When services or activities are provided by the governing body, under the direct supervision or management of school staff, our normal arrangements for child protection will apply. However, where services or activities are provided separately by another body this is not necessarily the case. The governing body or proprietor should therefore seek assurance that the body concerned has appropriate safeguarding and child protection policies and procedures in place (including inspecting these as needed); and ensure that there are arrangements in place to liaise with the school or college on these matters where appropriate. We as a governing body recognise, we should also ensure safeguarding requirements are included in any transfer of control agreement (i.e., lease or hire agreement), as a condition of use and occupation of the premises; and that failure to comply with this would lead to termination of the agreement.

## 6.22 Governors and commissioners of Alternative provision

- i. The cohort of pupils in Alternative Provision often have complex needs, it is important that governing bodies and proprietors of these settings are aware of the additional risk of harm that their pupils may be vulnerable to.
- ii. The Department has issued two pieces of statutory guidance to which commissioners of Alternative Provision should have regard:

- iii. DfE Statutory Guidance <https://www.gov.uk/government/publications/alternative-provision>
- iv. Education for children with health needs who cannot attend school - DfE Statutory Guidance <https://www.gov.uk/government/publications/education-for-children-with-health-needs-who-cannot-attend-school>

### 6.23 Our Pupils attending alternative provision

Where any of our young people attend any alternative provision:

1. We will ensure the alternative provision has undertaken all relevant safer recruitment checks required for their staff and have confirmed that in writing to us
2. Have appropriate policies in place to keep our children safe whilst attending and have shared those policies with us where necessary
3. Record that we have made these enquiries before our young person attends.

We will also ensure continued safeguarding of our student:

1. That we maintain regular contact with the alternative provider regarding any ongoing or new safeguarding concerns
2. Record specifically who is taking action to keep the child safe
3. Who is monitoring, what that looks like and how often.
4. Attendance and who will respond when the pupil is absent.
5. That any risk assessment is completed before our student attends – for example, exploitation risks for the child / young person using the train to travel some distance to the alternative provider.
6. That 1 – 5 above are reviewed regularly and who is responsible for doing that.

### 6.24 Professional Disagreements & Concerns

1. We recognise that, on occasions, there are disagreements between safeguarding professionals. Should any such situations arise in our school, we will always keep the child at the centre, and we will support the children and staff in our school by ensuring that our school follow the correct procedure should it be necessary to escalate concerns to the safeguarding children partnership.  
<https://www.westsussexscp.org.uk/professionals/professional-disagreements-and-concerns>

### 6.25 West Sussex Safeguarding Children Partnership

1. From Tuesday 25<sup>th</sup> June 2019 the West Sussex Safeguarding Children Board was replaced by the West Sussex Safeguarding Children Partnership<sup>9</sup> where three lead agencies; Health Partnership, Police and the Local Authority, will work together as joint and equal partners to shape bespoke arrangements for the needs of the children in West Sussex. As a Governing Body, we are fully committed to working with the Partnership and will enable governors and our safeguarding lead to attend events and briefings on how the partnership will support our children.

---

<sup>9</sup> West Sussex Safeguarding Children Partnership – <https://www.westsussexscp.org.uk/>

## 7 THE DESIGNATED SAFEGUARDING LEAD (DSL)

In this school, any individual can contact the Designated Safeguarding Lead if they have concerns about a child.

The Designated Safeguarding Lead in this school is:

Adrian Bates-Holland  
Kamilya Stedman

From October 2022 – January 2023  
From January 2023

The Deputy Safeguarding Leads in this school are:

Adrian Bates-Holland  
Sara Nash  
Victoria Brewer

From January 2023

Whilst the activities of the Designated Safeguarding Lead can be delegated to appropriately trained deputies the ultimate lead responsibility for child protection, as set out above, remains with the Designated Safeguarding Lead; this lead responsibility should not be delegated. We recognise that our DSL, as per the recommendations in KCSiE 2022, will be part of SLT.

### 7.1 The Designated Safeguarding Lead

1. We recognise Keeping Children Safe in Education (KCSiE) 2022, Annex C, gives an overview of the role of the DSL.
2. The Designated Safeguarding Leads and Deputies within our school will have the role explicitly stated in their job description.
3. The Safeguarding Lead will:
  - i. Assist the Governing Body in fulfilling their responsibilities under section 175 or 157 of the Education Act 2002.
  - ii. Attend initial training for their role and refresh this within two years.
  - iii. Keep their knowledge and skills updated at least annually.
  - iv. Ensure that all staff know who the Designated Safeguarding Lead is, their role and how to make contact.
  - v. Ensure that all staff understand their responsibilities in relation to signs of abuse and responsibility to refer any concerns to the Designated Safeguarding Lead. In addition, the Designated Safeguarding Lead should ensure that all staff read and understand Part 1 of Keeping Children Safe in Education 2020 and have a record of when this was done.
  - vi. Our DSL will pay particular attention to training staff and volunteers who have been unable to attend whole-school safeguarding training days and make sure they receive training as soon as possible, and whether the staff member / volunteer should be supervised in the interim or have any probation period extended.
  - vii. Ensure that new staff participate in safeguarding training as part of their induction.

- viii. Ensure that all staff receive safeguarding and child protection updates as required, but at least annually, to provide them with relevant skills and knowledge to safeguard children. The Designated Safeguarding Lead will also ensure staff, including all senior leaders and Chairs of Governors/Safeguarding Governors, are kept fully aware of any significant changes or updates to local authority child protection and safeguarding procedures, as and when they occur.
- ix. Be the lead for the school when engaging the managing professional difference protocol when there is disagreement between the school and other agencies in respect of action taken to keep a child safe. Found <https://www.westsussexscp.org.uk/professionals/professional-disagreements-and-concerns>
- x. Help promote educational outcomes by sharing the information about the welfare, safeguarding and child protection issues that children, including children with a social worker, are experiencing, or have experienced, with teachers and school and college leadership staff.
- xi. Liaise with relevant curriculum leads in setting to ensure Relationship Education, Relationship and Sex Education and Health Education is considered within all aspects of the curriculum.
- xii. Maintain child protection records for each child where concerns have been raised and ensure the receiving school is informed of any concerns and files are transferred when the child moves to another educational setting.
- xiii. During term time the designated safeguarding lead (or a deputy) will always be available (during school hours) for staff in the school to discuss any safeguarding concerns. Whilst generally speaking the designated safeguarding lead (or deputy) would be expected to be available in person, there may be rare occasions when the designated safeguarding lead is not available in person. In this eventuality, the designated safeguarding lead, or a deputy will always be contactable by phone and / or email.
- xiv. Our school will ensure that we provide the Local Authority with up-to-date emergency contact details should the Local Authority need to discuss an urgent safeguarding matter/issue/concern when school is closed.

## 7.2 The Designated Safeguarding Lead is expected to:

1. Refer cases of suspected abuse to the IFD or other Local Authority Children's Social Care services as appropriate. Where a referral is made that notes are completed that same day.
2. Support staff who make referrals to IFD or other Local Authority Children's Social Care.
3. For open cases, where a child / young person already has an allocated social worker, to refer any new concerns immediately to the allocated social worker.
4. For all child protection conferences, ensure reports are generated and shared ahead of the conference and in line with West Sussex Safeguarding Partnership expectations<sup>10</sup>.

---

<sup>10</sup> <https://www.westsussexscp.org.uk/professionals/working-together/cp-conferences>

5. Refer cases to the Channel programme where there is a radicalisation concern, as required.
6. Support staff who make referrals to the Channel programme.
7. Refer cases where a person is dismissed or left due to risk/harm to a child to the Disclosure and Barring Service as required.
8. Refer cases where a crime may have been committed to the police, either directly or via the IFD as required.
9. Ensure all child protection files are kept separately and securely from other records and accessible only by staff that need to access them for safeguarding purposes.
10. As frequently as needed and at least monthly, liaise with the Headteacher to inform him of issues, provide updates from attendance at Designated Safeguarding Lead network meetings and other safeguarding developments within the Local Authority, and provide an overview of current child protection cases, especially ongoing enquiries under Section 47 of the Children Act 1989 and police investigations.
11. As required, liaise with the Case Manager and where required the LADO, in all cases involving allegations against members of staff (both current and former members of staff).
12. Liaise with staff (especially pastoral support staff, school nurses, IT Technicians, and SENDCOs, or the named person with oversight for SEND in a college and Senior Mental Health Leads) on matters of safety and safeguarding (including online and digital safety) and when deciding whether to make a referral by liaising with relevant agencies.
13. To retain oversight of all Early Help plans, and review level or any change in risk at regular intervals.
14. Act as a source of support, advice and expertise for staff.

### 7.3 Training

1. As well as training all members of staff as above, the DSL and deputies should undergo training to provide them with the skills required to carry out the role. This training MUST be updated at least every two years.
2. As a Governing Body we will plan for staff changes to ensure there is sustained capacity and resilience for the DSL and deputies.
3. The DSL and deputies should undertake PREVENT Awareness training and ensure the rest of the refresh this at least every three years, as part of the wider continuous safeguarding training process in operation.

### 7.4 Designated Safeguarding Lead – continual professional development

1. The DSL should be afforded time to allow them to keep up to date with any developments relevant to their role, including:
2. Assist all staff to recognise that changes in behaviour can indicate potential abuse or neglect or be as a result of previous or current trauma, experienced by the child

or young person directly or being in the presence of others who have / are experiencing trauma.

3. Attending the DSL network termly meetings as organised by the Local Authority.
4. Understanding the assessment process for providing Early Help and intervention and ensure the school engages in Early Help consultations with the Dedicated Schools Team.
5. Maintaining a working knowledge of how West Sussex Local Authority conduct a child protection case conference and a child protection review conference and be able to attend and contribute to these effectively, when required to do so.
6. Ensuring each member of staff has access to and understands the school or college's child protection policy and procedures, especially new and part-time staff.
7. Being alert to the specific needs of children in need, those with special educational needs and young carers.
8. Have an understanding of the impact of a child's lived experiences on their presentation and ability to engage in learning. Identify appropriate learning opportunities for school staff to enable them to meet those individual needs and reflect on the schools policies and processes in light of what they have learned.
9. Keeping detailed, accurate, secure written records of concerns and referrals separately from the main pupil file and use these records to assess the likelihood of risk. The written records should clearly identify details of the concerns and what action was taken. If these are stored electronically, they must be password protected from the child's other files and accessible only by the Headteacher/DSL and deputy DSLs.<sup>11</sup>
10. Supporting the school or college with regards to the requirements of the PREVENT Duty and are able to provide advice and support to staff on protecting children from the risk of radicalisation.
11. Having knowledge of changes to local safeguarding procedures, processes, assessment tools etc and obtaining access to resources and attend any relevant or refresher training courses.
12. Encouraging a culture of listening to children and taking account of their wishes and feelings among all staff, in any measures the school or college may put in place to protect them.
13. Understand the importance of information sharing, both within the school and college, and with the three safeguarding partners, other agencies, organisations, and practitioners.
14. Ensuring that where a pupil transfers school and is on a Child Protection Plan or is a Child Looked After, the information is passed to the new school immediately and the child's social worker informed.
15. Acting as a source of support, advice, and expertise to staff on matters of safety and safeguarding and when deciding whether to make a referral by liaising with relevant agencies.

---

<sup>11</sup> See section 10 of this policy for more information on this area.

16. Ensuring that either they or the class teacher attends Child Protection conferences, core groups or other multi-agency planning meetings, contributes to assessments and provides a report which will normally have been shared with the parents ahead of the conference and in line with multi-agency requirements.<sup>12</sup>
17. Monitor the use of personalised time timetables in accordance with the 'Part Time Timetable Guidance' issued by WSCC Pupil Entitlement Team.<sup>13</sup>
18. Ensuring that any child who is subject to a child protection plan and who is absent without explanation is referred to their key worker's social care team. In some cases, any absence may be a cause for concern and warrant immediate reporting.
19. Are able to understand the unique risks associated with online safety and be confident that they have the relevant knowledge and up to date capability required to keep children safe whilst they are online at school, college or at home.
20. Can recognise the additional risks that children with SEN and disabilities (SEND) face online, for example, from online bullying, grooming and radicalisation and are confident they have the capability to support SEND children to stay safe online.
21. Ensuring the school's child protection policy is reviewed annually, working with Governing Bodies or proprietors and utilising peer and other reviews / audits where appropriate, to ensure that procedures are updated, implemented and reviewed regularly.
22. Being responsible for making the senior leadership team aware of trends in behaviour that may affect child welfare.

## 8 WHEN TO BE CONCERNED A CHILD IS AT RISK OF ABUSE

### 8.1 Our school recognises that all children and young people are vulnerable to abuse.

1. We will train ALL OF OUR STAFF, INCLUDING VOLUNTEERS, to recognise and report to the DSL immediately when they have concerns.
2. We will ensure all of our staff and volunteers have read part 1 of KCSIE 2022 and have attended safeguarding training at least once per year. All staff are expected to read this policy. All volunteers will be made aware of this policy and where to locate copies.
3. Our school is determined that all staff and volunteers will be aware of the main categories of abuse and the signs and symptoms so they can respond quickly and effectively by informing the Designated Safeguarding Lead where there are concerns.
4. **Abuse:**  
A form of maltreatment of a child. Somebody may abuse or neglect a child by inflicting harm or by failing to act to prevent harm. Harm can include ill treatment that is not physical as well as the impact of witnessing ill treatment of others. This can be particularly relevant, for example, in relation to the impact on children of all forms of domestic abuse. Children may be abused in a family or in an institutional

<sup>12</sup> <https://www.westsussexscp.org.uk/professionals/working-together/cp-conferences>

<sup>13</sup> For advice contact Pupil Entitlement on 03302 228200



or community setting by those known to them or, more rarely, by others. Abuse can take place wholly online, or technology may be used to facilitate offline abuse. Children may be abused by an adult or adults or by another child or children.

#### **5. Physical Abuse:**

A form of abuse which may involve hitting, shaking, throwing, poisoning, burning or scalding, drowning, suffocating or otherwise causing physical harm to a child. Physical harm may also be caused when a parent or carer fabricates the symptoms of, or deliberately induces illness in a child.

#### **6. Emotional Abuse:**

The persistent emotional maltreatment of a child such as to cause severe and adverse effects on the child's emotional development. It may involve conveying to a child that they are worthless or unloved, inadequate or valued only insofar as they meet the needs of another person. It may include not giving the child opportunities to express their views, deliberately silencing them or 'making fun' of what they say or how they communicate.

It may feature age or developmentally inappropriate expectations being imposed on children. These may include interactions that are beyond a child's developmental ability as well as overprotection and limitation of exploration and learning or preventing the child participating in normal social interaction. It may involve seeing or hearing the ill-treatment of another. It may involve serious bullying (including cyberbullying), causing children frequently to feel frightened or in danger, or the exploitation or corruption of children. Some level of emotional abuse is involved in all types of maltreatment of a child although it may occur alone.

#### **7. Sexual Abuse:**

Involves forcing or enticing a child or young person to take part in sexual activities, not necessarily involving violence, whether or not the child is aware of what is happening. The activities may involve physical contact, including assault by penetration (for example rape or oral sex) or non-penetrative acts such as masturbation, kissing, rubbing and touching outside of clothing.

They may also include non-contact activities such as involving children in looking at, or in the production of, sexual images, watching sexual activities, encouraging children to behave in sexually inappropriate ways, or grooming a child in preparation for abuse (including via the internet) by establishing a close relationship or friendship. Sexual abuse is not solely perpetrated by adult males; women can also commit acts of sexual abuse as can other children.

#### **8. Neglect**

The persistent failure to meet a child's basic physical and/or psychological needs, likely to result in the serious impairment of the child's health or development. Neglect may occur during pregnancy as a result of maternal substance abuse. Once a child is born neglect may involve a parent or carer failing to: provide adequate food, clothing and shelter (including exclusion from home or abandonment), protect a child from physical and emotional harm or danger, ensure adequate supervision (including the use of inadequate caregivers), or ensure access to appropriate medical care or treatment. It may also include neglect of, or unresponsiveness to, a child's basic emotional needs.

### **8.2 Recognising Physical Abuse**



Physical abuse may involve hitting, shaking, throwing, poisoning, burning or scalding, drowning, suffocating, or otherwise causing physical harm to a child. Physical harm may also be caused when a parent or carer fabricates the symptoms of, or deliberately induces, illness in a child.

### Indicators in the child

#### Bruising

It is often possible to differentiate between accidental and inflicted bruises. The following must be considered as non-accidental unless there is evidence, or an adequate explanation provided:

- bruising in or around the mouth
- two simultaneous bruised eyes, without bruising to the forehead, (rarely accidental, though a single bruised eye can be accidental or abusive)
- repeated or multiple bruising on the head or on sites unlikely to be injured accidentally for example the back, mouth, cheek, ear, stomach, chest, under the arm, neck, genital and rectal areas
- variation in colour possibly indicating injuries caused at different times
- the outline of an object used e.g., belt marks, handprints or a hairbrush
- linear bruising at any site particularly on the buttocks, back or face
- bruising or tears around or behind, the earlobe/s indicating injury by pulling or twisting
- bruising around the face
- grasp marks to the upper arms, forearms or leg
- petechial haemorrhages (pinpoint blood spots under the skin) commonly associated with slapping, smothering/suffocation, strangling and squeezing

#### Fractures

Fractures may cause pain, swelling and discolouration over a bone or joint. It is unlikely that a child will have had a fracture without the carers being aware of the child's distress. If the child is not using a limb, has pain on movement and/or swelling of the limb, there may be a fracture.

There are grounds for concern if:

- the history provided is vague, non-existent or inconsistent
- there are associated old fractures
- medical attention is sought after a period of delay when the fracture has caused symptoms such as swelling, pain or loss of movement.

Rib fractures are only caused in major trauma such as in a road traffic accident, a severe shaking injury or a direct injury such as a kick.

Skull fractures are uncommon in ordinary falls, i.e., from three feet or less. The injury is usually witnessed, the child will cry and if there is a fracture, there is likely to be swelling on the skull developing over 2 to 3 hours. All fractures of the skull should be taken seriously.

#### Mouth Injuries

Tears to the frenulum (tissue attaching upper lip to gum) often indicates force feeding of a baby or a child with a disability. There is often finger bruising to the cheeks and around the mouth. Rarely, there may also be grazing on the palate.

#### Poisoning

Ingestion of tablets or domestic poisoning in children under 5 is usually due to the carelessness of a parent or carer but it may be self-harm even in young children.

### Bite Marks

Bite marks can leave clear impressions of the teeth when seen shortly after the injury has been inflicted. The shape then becomes a more defused ring bruise or oval or crescent shaped. Those over 3cm in diameter are more likely to have been caused by an adult or older child. A medical/dental opinion, preferably within the first 24 hours, should be sought where there is any doubt over the origin of the bite.

### Burns and Scalds

It can be difficult to distinguish between accidental and non-accidental burns and scalds. Scalds are the most common intentional burn injury recorded.

Any burn with a clear outline may be suspicious e.g., circular burns from cigarettes, linear burns from hot metal rods or electrical fire elements, burns of uniform depth over a large area, scalds that have a line indicating immersion or poured liquid.

Old scars indicating previous burns/scalds, which did not have appropriate treatment or adequate explanation. Scalds to the buttocks of a child, particularly in the absence of burns to the feet, are indicative of dipping into a hot liquid or bath.

The following points are also worth remembering:

- A responsible adult checks the temperature of the bath before the child gets in.
- A child is unlikely to sit down voluntarily in a hot bath and cannot accidentally scald its bottom without also scalding his or her feet.
- A child getting into too hot water of his or her own accord will struggle to get out and there will be splash marks.

### Scars

A large number of scars or scars of different sizes or ages, or on different parts of the body, or unusually shaped, may suggest abuse.

Emotional / behavioural presentation:

- refusal to discuss injuries
- admission of punishment which appears excessive
- fear of parents being contacted and fear of returning home
- withdrawal from physical contact
- arms and legs kept covered in hot weather
- fear of medical help
- aggression towards others
- frequently absent from school
- an explanation which is inconsistent with an injury
- several different explanations provided for an injury.

Indicators in the parent:

- may have injuries themselves that suggest domestic violence
- not seeking medical help/unexplained delay in seeking treatment reluctant to give information or mention previous injuries
- absent without good reason when their child is presented for treatment
- disinterested or undisturbed by accident or injury
- aggressive towards child or others
- unauthorised attempts to administer medication
- tries to draw the child into their own illness
- past history of childhood abuse, self-harm, somatising disorder or false allegations of physical or sexual assault
- parent/carer may be over involved in participating in medical tests, taking temperatures and measuring bodily fluids

- observed to be intensely involved with their children, never taking a much-needed break nor allowing anyone else to undertake their child's care.
- may appear unusually concerned about the results of investigations which may indicate physical illness in the child
- wider parenting difficulties may (or may not) be associated with this form of abuse
- parent/carer has convictions for violent crimes.

Indicators in the family/environment:

- marginalised or isolated by the community
- history of mental health, alcohol or drug misuse or domestic violence
- history of unexplained death, illness or multiple surgery in parents and/or siblings of the family
- past history of childhood abuse, self-harm, somatising disorder or false allegations of physical or sexual assault or a culture of physical chastisement.

### 8.3 Recognising perplexing cases which may indicate a possibility of fabricated or Induced Illness (FFI)

1. Professionals may be concerned at the possibility of a child suffering significant harm as a result of having illness fabricated or induced by their carer. Possible concerns are:
  - discrepancies between reported and observed medical conditions, such as the incidence of fits
  - attendance at various hospitals, in different geographical areas
  - development of feeding/eating disorders, as a result of unpleasant feeding interactions
  - the child developing abnormal attitudes to their own health
  - non-organic failure to thrive - a child does not put on weight and grow and there is no underlying medical cause
  - speech, language or motor developmental delays
  - dislike of close physical contact
  - attachment disorders
  - low self esteem
  - poor quality or no relationships with peers because social interactions are restricted
  - poor attendance at school and under-achievement.
2. These cases are very complex and for a case to be considered as FFI is after careful and detailed review by a consultant paediatrician. Please see Pan-Sussex Child Protection Procedures for further information  
<https://sussexchildprotection.procedures.org.uk/tkypss/children-in-specific-circumstances/fabricated-or-induced-illness-fii-and-perplexing-presentations-including-fii-by-carers>
3. Where any school has concerns in this area, they must speak with their school nurse in the first instance.

### 8.4 Recognising Emotional Abuse

1. Emotional abuse is the persistent emotional maltreatment of a child such as to cause severe and persistent adverse effects on the child's emotional development. It may involve conveying to children that they are worthless or unloved, inadequate or valued only insofar as they meet the needs of another person.

2. It may include not giving the child opportunities to express their views, deliberately silencing them or 'making fun' of what they say or how they communicate.
3. It may feature age or developmentally inappropriate expectations being imposed on children. These may include interactions that are beyond the child's developmental capability, as well as overprotection and limitation of exploration and learning or preventing the child participating in normal social interaction.
4. It may involve seeing or hearing the ill-treatment of another. It may involve serious bullying (including cyberbullying), causing children frequently to feel frightened or in danger, or the exploitation or corruption of children.
5. Some level of emotional abuse is involved in all types of maltreatment of a child though it may occur alone.

Indicators in the child:

- developmental delay
- abnormal attachment between a child and parent/carer e.g., anxious, indiscriminate or no attachment
- aggressive behaviour towards others
- child scapegoated within the family
- frozen watchfulness, particularly in pre-school children
- low self-esteem and lack of confidence
- withdrawn or seen as a 'loner' - difficulty relating to others
- over-reaction to mistakes
- fear of new situations
- inappropriate emotional responses to painful situations
- neurotic behaviour (e.g., rocking, hair twisting, thumb sucking)
- self-harm
- fear of parents being contacted
- extremes of passivity or aggression
- drug/solvent abuse
- chronic running away
- compulsive stealing
- low self-esteem
- air of detachment – 'don't care' attitude
- social isolation – does not join in and has few friends
- depression, withdrawal
- behavioural problems e.g., aggression, attention seeking, hyperactivity, poor attention
- low self-esteem, lack of confidence, fearful, distressed, anxious
- poor peer relationships including withdrawn or isolated behaviour.

Indicators in the parent:

- domestic abuse, adult mental health problems and parental substance misuse may be features in families where children are exposed to abuse
- abnormal attachment to child e.g., overly anxious or disinterest in the child
- scapegoats one child in the family
- imposes inappropriate expectations on the child e.g., prevents the child's developmental exploration or learning, or normal social interaction through overprotection
- wider parenting difficulties may, or may not, be associated with this form of abuse.

Indicators of in the family/environment:

- lack of support from family or social network
- marginalised or isolated by the community
- history of mental health, alcohol or drug misuse or domestic violence

- history of unexplained death, illness, or multiple surgery in parents and/or siblings of the family
- history of childhood abuse, self-harm, somatising disorder, or false allegations of physical or sexual assault or a culture of physical chastisement.

## 8.5 Recognising Neglect

Neglect is the persistent failure to meet a child's basic physical and/or psychological needs, likely to result in the serious impairment of the child's health or development. Neglect may occur during pregnancy as a result of maternal substance abuse.

## 8.6 Neglect - Using the West Sussex Partnership Neglect Suite of Tools

1. West Sussex Safeguarding Children Partnership have developed a range of tools to assist professionals in identifying and responding to neglect.
2. These tools include [A Day in My Life Templates](#) to enable professionals to assess the needs of individual children. These tools are fundamental in hearing the child's voice when there are concerns.
3. Our school is committed to using these tools when assessing impact of abuse and neglect on children. As a Governing Body we will monitor use of this tool whenever assessing children who may be at risk of neglect.

Once a child is born, neglect may involve a parent or carer failing to:

- provide adequate food, clothing and shelter (including exclusion from home or abandonment)
- protect a child from physical and emotional harm or danger
- ensure adequate supervision (including the use of inadequate caregivers)
- ensure access to appropriate medical care or treatment.

It may also include neglect of, or unresponsiveness to, a child's basic emotional needs.

Indicators in the child

Physical presentation:

- failure to thrive or, in older children, short stature
- underweight
- frequent hunger
- dirty, unkempt condition
- inadequately clothed, clothing in a poor state of repair
- red/purple mottled skin, particularly on the hands and feet, seen in the winter due to cold
- swollen limbs with sores that are slow to heal, usually associated with cold injury
- abnormal voracious appetite
- dry, sparse hair
- recurrent/untreated infections or skin conditions e.g., severe nappy rash, eczema or persistent head lice/scabies/diarrhoea
- unmanaged / untreated health/medical conditions including poor dental health
- frequent accidents or injuries.

Development:

- general delay, especially speech and language delay

- inadequate social skills and poor socialization.

Emotional/behavioural presentation:

- attachment disorders
- absence of normal social responsiveness
- indiscriminate behaviour in relationships with adults
- emotionally needy
- compulsive stealing
- constant tiredness
- frequently absent or late at school
- poor self esteem
- destructive tendencies
- thrives away from home environment
- aggressive and impulsive behaviour
- disturbed peer relationships
- self-harming behaviour.

Indicators in the parent:

- dirty, unkempt presentation
- inadequately clothed
- inadequate social skills and poor socialisation
- abnormal attachment to the child e.g., anxious
- low self- esteem and lack of confidence
- failure to meet the basic essential needs e.g., adequate food, clothes, warmth, hygiene
- failure to meet the child's health and medical needs e.g., poor dental health; failure to attend or keep appointments with health visitor, GP or hospital; lack of GP registration; failure to seek or comply with appropriate medical treatment; failure to address parental substance misuse during pregnancy
- child left with adults who are intoxicated or violent
- child abandoned or left alone for excessive periods
- wider parenting difficulties may or may not be associated with this form of abuse.

Indicators in the family/environment:

- history of neglect in the family
- family marginalised or isolated by the community
- family has history of mental health, alcohol or drug misuse or domestic violence
- history of unexplained death, illness, or multiple surgery in parents and/or siblings of the family
- family has a history of childhood abuse, self-harm, somatising disorder, or false allegations of physical or sexual assault or a culture of physical chastisement
- dangerous or hazardous home environment including failure to use home safety equipment, risk from animals
- poor state of home environment e.g., unhygienic facilities, lack of appropriate sleeping arrangements, inadequate ventilation (including passive smoking) and lack of adequate heating
- lack of opportunities for child to play and learn.

## 8.7 Recognising Sexual Abuse

1. Sexual abuse involves forcing or enticing a child or young person to take part in sexual activities, not necessarily involving a high level of violence, whether or not the child is aware of what is happening.
2. The activities may involve physical contact, including assault by penetration (for example, rape or oral sex) or non-penetrative acts such as masturbation, kissing, rubbing, and touching outside of clothing.

3. They may also include non-contact activities, such as involving children in looking at, or in the production of, sexual images, watching sexual activities, encouraging children to behave in sexually inappropriate ways, or grooming a child in preparation for abuse (including via the internet).
4. Sexual abuse is not solely perpetrated by adult males, women can also commit acts of sexual abuse, as can other children.

#### Indicators in the child -

##### Physical presentation:

- urinary infections, bleeding, or soreness in the genital or anal areas
- recurrent pain on passing urine or faeces
- blood on underclothes
- sexually transmitted infections
- vaginal soreness or bleeding
- pregnancy in a younger girl where the identity of the father is not disclosed and/or there is secrecy or vagueness about the identity of the father
- physical symptoms such as injuries to the genital or anal area, bruising to buttocks, abdomen and thighs, sexually transmitted disease, presence of semen on vagina, anus, external genitalia, or clothing.

##### Emotional/behavioural presentation:

- makes a disclosure
- demonstrates sexual knowledge or behaviour inappropriate to age/stage of development, or that is unusually explicit
- inexplicable changes in behaviour, such as becoming aggressive or withdrawn
- self-harm - eating disorders, self-mutilation and suicide attempts
- poor self-image, self-harm, self-hatred
- reluctant to undress for PE
- running away from home
- poor attention / concentration (world of their own)
- sudden changes in school work habits, become truant
- withdrawal, isolation or excessive worrying
- inappropriate sexualised conduct
- sexually exploited or indiscriminate choice of sexual partners
- wetting or other regressive behaviours e.g., thumb sucking
- draws sexually explicit pictures
- depression.

##### Indicators in the parents:

- comments made by the parent/carer about the child
- lack of sexual boundaries
- wider parenting difficulties or vulnerabilities
- grooming behaviour
- parent is a sex offender.

##### Indicators in the family/environment:

- marginalised or isolated by the community
- history of mental health, alcohol or drug misuse or domestic violence
- history of unexplained death, illness or multiple surgery in parents and/or siblings of the family
- past history of childhood abuse, self-harm, or a culture of physical chastisement
- family member is a sex offender.

## 8.8 Preventing Radicalisation

1. As part of our **safeguarding** training our school will ensure all staff are trained in respect of preventing radicalisation. This training will be refreshed every three years.
2. We recognise more information is contained within the school's safeguarding guidebook.
3. We recognise children are vulnerable to extremist ideology and radicalisation. Similar to protecting children from other forms of harms and abuse, protecting children from this risk should be a part of a schools' or colleges' safeguarding approach.
4. Extremism is the vocal or active opposition to our fundamental values, including democracy, the rule of law, individual liberty and the mutual respect and tolerance of different faiths and beliefs. This also includes calling for the death of members of the armed forces.
5. Radicalisation refers to the process by which a person comes to support terrorism and extremist ideologies associated with terrorist groups.
6. Terrorism is an action that endangers or causes serious violence to a person/people; causes serious damage to property; or seriously interferes or disrupts an electronic system. The use or threat must be designed to influence the government or to intimidate the public and is made for the purpose of advancing a political, religious, or ideological cause.
7. There is no single way of identifying whether a child is likely to be susceptible to an extremist ideology. Background factors combined with specific influences such as family and friends may contribute to a child's vulnerability. Similarly, radicalisation can occur through many different methods (such as social media or the internet) and settings (such as within the home).
8. However, it is possible to protect vulnerable people from extremist ideology and intervene to prevent those at risk of radicalisation being radicalised. As with other safeguarding risks, staff should be alert to changes in children's behaviour, which could indicate that they may be in need of help or protection. Staff should use their judgement in identifying children who might be at risk of radicalisation and act proportionately which may include the designated safeguarding lead (or deputy) making a Prevent referral.

## 8.9 The Prevent Duty

1. The school's designated safeguarding lead (and any deputies) should be aware of local procedures for making a Prevent referral and that our school/college is subject to a duty under section 26 of the Counter-Terrorism and Security Act 2015 (the CTSA 2015), in the exercise of their functions, to have "due regard to the need to prevent people from being drawn into terrorism".
2. This duty is known as the PREVENT Duty.
3. The PREVENT Duty will be seen as part of schools' wider safeguarding obligations.
4. Our Designated Safeguarding Leads and other senior leaders will familiarise themselves with the revised Prevent Duty Guidance



<https://www.gov.uk/government/publications/prevent-duty-guidance> especially paragraphs 57-76, which are specifically concerned with schools and childcare.

5. The guidance is set out in terms of four general themes: risk assessment, working in partnership, staff training, and IT policies.
6. There is additional guidance: [Prevent duty guidance: for further education institutions in England and Wales](#) that applies to colleges.
7. We recognise that further information can be obtained from [WSCC Preventing Extremism](#) and also Keeping Children Safe in Education 2020 for national on-line training courses(pages 89-91).

#### 8.10 Sexual Violence & Harassment

1. We are familiar with the guidance and information contained with part 5 KCSiE 2022 and also DfE guidance [https://assets.publishing.service.gov.uk/government/uploads/system/uploads/attachment\\_data/file/999239/SVSH\\_2021.pdf](https://assets.publishing.service.gov.uk/government/uploads/system/uploads/attachment_data/file/999239/SVSH_2021.pdf) which has been produced to assist schools and colleges to manage cases of sexual violence and harassment between pupils.
2. We recognise more information on how to respond to cases is contained within the schools safeguarding handbook.
3. At our school we believe that all children have a right to attend school and learn in a safe environment. Children should be free from harm by adults in the school and other pupils.
4. We recognise that some pupils will sometimes negatively affect the learning and wellbeing of others and their behaviour will be dealt with under the school's behaviour policy or anti -bullying policy in the first instance.
5. However, we recognise that some allegations may be of such a serious nature that they may raise safeguarding concerns.
6. **All staff** should recognise that children are capable of abusing their peers. All our staff should be clear on our school policy and procedures with regard to child-on-child abuse.
7. We recognise the importance of an ambitious broad and balanced curriculum which develops students understanding of consent, acceptable behaviour, keeping themselves safe and healthy relationships.
8. We will ensure that, in our school or college, our policy will include procedures to minimise the risk of child-on-child abuse.
9. We recognise and will ensure that systems should be in place (and they should be well promoted, easily understood and easily accessible) for children to confidently report abuse, knowing their concerns will be treated seriously.
10. We understand that schools not recognising, acknowledging or understanding the scale of harassment and abuse and/or downplaying some behaviours related to abuse can lead to a culture of unacceptable behaviour, an unsafe environment and in worst case scenarios a culture that normalises abuse leading to children

accepting it as normal and not coming forward to report it. We will ensure we have a positive cultural of challenge and reporting in our school.

11. We recognise that children may not find it easy to tell staff about their abuse verbally. We understand children can show signs or act in ways that they hope adults will notice and react to. In some cases, the victim may not make a direct report. For example, a friend may make a report, or a member of school or college staff may overhear a conversation that suggests a child has been harmed or a child's own behaviour might indicate that something is wrong. As per this policy, if staff have any concerns about a child's welfare, they should act on them immediately rather than wait to be told.
12. As always when concerned about the welfare of a child, all our staff should act in the best interests of the child. In all cases, schools and colleges should follow general safeguarding principles as set out throughout this policy. Immediate consideration should be given as to how best to support and protect the victim and the alleged perpetrator(s) (and any other children involved/impacted).
13. The starting point regarding any report should always be that there is a zero-tolerance approach to sexual violence and sexual harassment, and it is never acceptable, and it will not be tolerated. It is especially important not to pass off any sexual violence or sexual harassment as "banter", "just having a laugh", "part of growing up" or "boys being boys" as this can lead to a culture of unacceptable behaviours and an unsafe environment for children.
14. Our school recognises sexual violence and sexual harassment can occur between two children of **any** age and sex. It can also occur through a group of children sexually assaulting or sexually harassing a single child or group of children.
15. Children who are victims of sexual violence and sexual harassment will likely find the experience stressful and distressing. This will, in all likelihood, adversely affect their educational attainment. Sexual violence and sexual harassment exist on a continuum and may overlap, they can occur online and offline (both physical and verbal) and are never acceptable.
16. It is important that **all** victims are taken seriously and offered appropriate support. Staff should be aware that some groups are potentially more at risk. Evidence shows girls, children with SEND and LGBT children are at greater risk.

#### 8.11 Our staff will recognise the importance of:

1. Making clear that sexual violence and sexual harassment is not acceptable, will never be tolerated and is not an inevitable part of growing up.
2. Not tolerating or dismissing sexual violence or sexual harassment as "banter", "part of growing up", "just having a laugh" or "boys being boys"; and
3. Challenging behaviours (potentially criminal in nature), such as grabbing bottoms, breasts and genitalia, flicking bras and lifting up skirts. Dismissing or tolerating such behaviours risks normalising them.
4. Recognition of the gendered nature of child-on-child abuse (i.e., that it is more likely that girls will be victims and boys' perpetrators), but that all child-on-child abuse is unacceptable and will be taken seriously.

5. The different forms child on child abuse can take, such as: bullying (including cyberbullying).
6. Sexual violence and sexual harassment. (Which is covered in much more detail below).
7. Consensual and non-consensual sharing of nudes and semi-nude images and/or videos (also known as sexting or youth produced sexual imagery) Also covered below.
8. causing someone to engage in sexual activity without consent, such as forcing someone to strip, touch themselves sexually, or to engage in sexual activity with a third party
9. Upskirting, which typically involves taking a picture under a person's clothing without them knowing, with the intention of viewing their genitals or buttocks to obtain sexual gratification, or cause the victim humiliation, distress or alarm.
10. Initiation/hazing type violence and rituals.

#### 8.12 Preventing Child on Child Abuse

As a school we will:

1. Provide a developmentally appropriate education syllabus which develops pupils understanding of consent, acceptable behaviour, keeping themselves safe and healthy relationships.
2. Have systems in place for any pupil to raise concerns with staff, knowing that they will be listened to, believed and valued.
3. Deliver targeted work on assertiveness and keeping safe to those children identified as being at risk.
4. Develop robust risk assessments and providing targeted work for pupils identified as being a potential risk to other pupils.
5. Provide clarity on how allegations of child-on-child abuse will be recorded, investigated, and dealt with.
6. Have clear processes as to how victims, perpetrators and any other child affected by child-on-child abuse will be supported.
7. Provide a clear statement that abuse is abuse and should never be tolerated or passed off as "banter", "just having a laugh" or "part of growing up".
8. Recognise the gendered nature of child-on-child abuse (i.e., that it is more likely that girls will be victims and boys' perpetrators), but that all child-on-child abuse is unacceptable and will be taken seriously

#### 8.13 Sexual violence – rape & sexual assault, including by penetration.

- We recognise it is important that our staff are aware of sexual violence and the fact children can, and sometimes do, abuse their peers in this way. When referring to sexual violence we are referring to sexual offences under the Sexual Offences Act.

- **Rape:** A person (A) commits an offence of rape if: he intentionally penetrates the vagina, anus or mouth of another person (B) with his penis, B does not consent to the penetration and A does not reasonably believe that B consents.
- **Assault by Penetration:** A person (A) commits an offence if: s/he intentionally penetrates the vagina or anus of another person (B) with a part of her/his body or anything else, the penetration is sexual, B does not consent to the penetration and A does not reasonably believe that B consents.
- **Sexual Assault:** A person (A) commits an offence of sexual assault if: s/he intentionally touches another person (B), the touching is sexual, B does not consent to the touching and A does not reasonably believe that B consents.

#### 8.14 What is consent?

1. Consent is about having the freedom and capacity to choose. Consent to sexual activity may be given to one sort of sexual activity but not another, e.g., to vaginal but not anal sex or penetration with conditions, such as wearing a condom. Consent can be withdrawn at any time during sexual activity and each time activity occurs. Someone consents to vaginal, anal or oral penetration only if s/he agrees by choice to that penetration and has the freedom and capacity to make that choice.

#### 8.15 Sexual harassment

1. When referring to sexual harassment we mean 'unwanted conduct of a sexual nature' that can occur online and offline. When we reference sexual harassment, we do so in the context of child-on-child sexual harassment. Sexual harassment is likely to: violate a child's dignity, and/or make them feel intimidated, degraded, or humiliated and/or create a hostile, offensive or sexualised environment.
2. Whilst not intended to be an exhaustive list, sexual harassment can include:
  - Sexual comments, such as: telling sexual stories, making lewd comments, making sexual remarks about clothes and appearance and calling someone sexualised names.
  - Sexual "jokes" or taunting.
  - Physical behaviour, such as: deliberately brushing against someone, interfering with someone's clothes (schools and colleges should be considering when any of this crosses a line into sexual violence - it is important to talk to and consider the experience of the victim) and displaying pictures, photos, or drawings of a sexual nature; and
  - Online sexual harassment. This may be standalone, or part of a wider pattern of sexual harassment and/or sexual violence<sup>14</sup>. It may include:
  - Non-consensual sharing of sexual images and videos; Sexualised online bullying; Unwanted sexual comments and messages, including, on social media; and Sexual exploitation; coercion and threats

#### 8.16 Upskirting

1. Our school recognises that upskirting is a criminal offence and we will take any allegations of such behaviour very seriously.

---

<sup>14</sup> Project DESHAME provides useful research advice and resources regarding online sexual harassment – found [here](#)

2. Upskirting typically involves taking a picture up or under a person's clothing without them knowing. The picture is taken with the intention of viewing their genitals or buttocks to obtain sexual gratification, or cause the victim humiliation, distress, or alarm.
3. When an allegation of upskirting is brought to our attention we will respond as we would for any other disclosure of potential abuse.
4. We will follow the principles as set out in responding to reports of sexual violence and harassment above and will take advice from IFD on how to progress any allegation of upskirting.
5. Where any suspect for a case of upskirting is identified as being a pupil at our school we will initially be guided by police but will always seek to support that pupil in accordance with the principles set out in 22.23 below.

### 8.17 Sharing Nudes and semi-nude images

1. We recognise the guidance issued in December 2020 by the Dept for Digital, Culture, Media and Sport and the UK Council for Internet Safety published guidance Sharing nudes and semi nudes: advice for education settings working with children and young people<sup>15</sup>.
2. This guidance separates incidents of those under 18 sharing nude or semi-nude images into two broad areas: 1 - aggravated and 2 - experimental.
3. Aggravated can be sub-categorised into the following areas:
  - An adult is involved,
  - Youth only and there is an intent to harm – for example used to threaten or exploitation, Youth only and reckless misuse – for example sharing images widely without consent but no intent to harm.
4. Experimental can be sub-categorised into
  - Where images have been shared within a romantic context
  - Where young people share images of themselves with others for sexual attention<sup>16</sup>
  - Another reason
5. Response
  - We will have a thorough understanding of the guidance and assess each case on its own merits. Where aggravating factors may be present, the matter should be referred to police on 101 and IFD.
  - Where there are no clear aggravating factors, settings should consider whether a safeguarding referral to IFD should still be made, taking advice from IFD where appropriate

---

<sup>15</sup><https://www.gov.uk/government/publications/sharing-nudes-and-semi-nudes-advice-for-education-settings-working-with-children-and-young-people/sharing-nudes-and-semi-nudes-advice-for-education-settings-working-with-children-and-young-people>

<sup>16</sup> The guidance identifies sexual attention seeking. The phrase 'sexual attention seeking' is taken directly from the typology however it is important to note that incidents within this category can be a part of normal childhood. A child or young person should not be blamed for taking and sharing their image.

## 9 CHILDREN REQUIRING MENTAL HEALTH SUPPORT

1. We recognise our school has an important role to play in supporting the mental health and wellbeing of our pupils.
2. We recognise mental health problems can, in some cases, be an indicator that a child has suffered or is at risk of suffering abuse, neglect or exploitation.

### 9.1 Our school has an Emotional Well-being Lead and that is Sara Nash.

1. As a school we will have a clear system and process in place for identifying possible mental health problems, including routes to escalate and clear referral and accountability systems. We will make sure all staff and volunteers are aware of our system.
2. Where there are concerns about the mental health, wellbeing and safeguarding of a child, staff will immediately discuss those concerns with the Designated Safeguarding Lead.
3. We are aware of recent government publications:
  - Preventing and tackling bullying  
[https://assets.publishing.service.gov.uk/government/uploads/system/uploads/attachment\\_data/file/623895/Preventing\\_and\\_tackling\\_bullying\\_advice.pdf](https://assets.publishing.service.gov.uk/government/uploads/system/uploads/attachment_data/file/623895/Preventing_and_tackling_bullying_advice.pdf)
  - Mental health and behaviour in schools  
<https://www.gov.uk/government/publications/mental-health-and-behaviour-in-schools--2> and
  - Promoting children and young people's emotional health and wellbeing  
<https://www.gov.uk/government/publications/promoting-children-and-young-peoples-emotional-health-and-wellbeing>

### 9.2 West Sussex Single Point of Access (SPoA)

- I. Following a Sussex-wide review of emotional wellbeing and mental health services for children and young people, a new West Sussex Single Point of Access (SPoA) for emotional wellbeing and mental health support launched Wednesday 1 June 2022.
- II. The new service provides a simplified single route so that children, young people, families, carers and professionals can be directed to the right service, eliminating the need to refer to multiple services.
- III. Led by Sussex Partnership NHS Foundation Trust's Child and Adolescent Mental Health Service (CAMHS), the new arrangement is delivered in partnership with West Sussex County Council's Youth Emotional Support Service (YES) and YMCA Dialogue.
- IV. The three services work together to process (triage) the referrals and determine which service is the most appropriate offer for the young person, which may also

include partnership services. In time, more emotional wellbeing services will be introduced into the service.

### 9.3 Making a referral

Young people, parents/carers and wider professionals can now make a referral to the West Sussex SPoA at [www.e-wellbeing.co.uk/support](http://www.e-wellbeing.co.uk/support)

Key details:

- The SPoA will be open Monday to Friday 9am-5pm
- The young person must consent to the request for service and understand they may be directed to another service outside the SPoA
- The service will accept referrals for children and young people from the age of four up to the young person's 18th birthday, who are registered with a West Sussex GP, whilst recognising and working within NHS CHOICE regulations
- If a young person who is close to turning 18 is referred to the service with a mental health need they will be signposted to adult services.
- If you have any questions about the new service, please contact Naomi Frith, Project Manager, at [naomi.frith@spft.nhs.uk](mailto:naomi.frith@spft.nhs.uk).

Alternatively, please go to [www.sussexpartnership.nhs.uk/west-sussex-spoa](http://www.sussexpartnership.nhs.uk/west-sussex-spoa)

### 9.4 Additional Services

1. Our staff are aware of the West Sussex Community Mental Health Liaison Service <https://www.sussexpartnership.nhs.uk/west-sussex-cmhl-service> who provide an early intervention and prevention service for professionals who are working with young people under the age of 18 and are concerned about a young person's mental health and wellbeing. This service is available to our school.
2. We are aware that we can obtain advice and support from School Nursing Service <https://www.sussexcommunity.nhs.uk/downloads/services/west-sussex-school-nursing/west-sussex-school-nursing-leaflet.pdf>
3. We are also aware of the resources available to our school from the Mentally Healthy Schools website <https://www.mentallyhealthyschools.org.uk/>
4. We are also aware of how we can refer a child or young person to CAMHS <https://www.westsussex.gov.uk/media/12781/camhsref.pdf>

### 9.5 Self-Harm Guidance for Schools

1. Self-harm page accessible to all schools in West Sussex County council can be found at <https://schools.westsussex.gov.uk/Services/4720> Here you can find information, training, and resource in relation to self-harm. This includes bespoke self-harm and distress tolerance sessions that can be accessed for free at any time as well as updates on new innovative projects in relation to self-harm.
2. Also available on the self-harm page is managing self-harm guidance and tool kit for schools.

3. As a school we recognise the self-harm resources are available to anyone in education, to support staff when dealing with students who self-harm or are at risk of intentionally harming themselves.
4. Our school will use this guidance to support out students and staff.

## 9.6 COVID-19

1. We are aware of the impact of COVID-19 Pandemic can have on the mental health and wellbeing of children and young people and we recognise that we will provide support to all our children and young people.

## 9.7 Mental Health and RE/RSE/HE

1. Through our curriculum, our school will maximise the opportunities to teach our children and young people about mental health as part of the health education cornerstone of our Relationship Education/Relationship and Sex Education and Health Education.

# 10. DEALING WITH A DISCLOSURE OF ABUSE

## 10.1 We are determined

1. That our school will be a safe place where children feel able to talk to a trusted adult if they are concerned or worried.
2. We are also determined that all staff, including volunteers, will know how to respond appropriately should a child disclose to them.

## 10.2 If a child discloses – we will:

- Accept what the child says.
- Stay calm; the pace should be dictated by the child without them being pressed for detail. DO NOT ASK LEADING QUESTIONS such as “did x touch you there?” It is our role to listen - not to investigate.
- If more information is needed to establish if there has been abuse use open questions such as “describe what happened?” “Tell me what happened?”
- Use age-appropriate vocabulary and language; avoid jargon or terms the child may not understand.
- Be careful not to burden the child with guilt by asking questions like “Why didn’t you tell me before?” but you could ask ‘Have you spoken to anyone else about this?’
- Acknowledge how hard it maybe for the child to tell anyone what has happened.
- Not criticise the perpetrator, the child may well have a relationship with them.



- Not promise confidentiality but reassure the child that they have done the right thing, explain whom we will have to tell (the Designated Safeguarding Lead) and why and, depending on the child's age, what the next stage will be. It is important that we avoid making promises that we cannot keep such as "I'll stay with you all the time" or "it will be all right now."
- The Designated Safeguarding Lead will decide on when and how to contact the parent / carer to share concerns.
- The Designated Safeguarding Lead will share concerns with parents / carers before making a referral to IFD unless by doing so could escalate the risk to the child or other vulnerable person or impede a police investigation.

If we are in any doubt as to whether to refer the matter, we will speak and discuss with IFD.

### 10.3 When recording information, we will:

1. Be aware that any records made may well be used in subsequent investigations and possible court hearings.
2. Make detailed notes at the time or immediately afterwards; record the date, time, place and context of disclosure or concern. Record facts and what was said but not your assumption or interpretation.
3. If it is observation of bruising or an injury record the detail, e.g., "right arm above elbow".
4. Use skin / body maps if necessary – specimen examples are available at Annex 7 below.
5. Not take photographs.
6. Note the non-verbal behaviour and the key words in the language used by the child but do not to translate into 'adult language'.
7. Record the date, time, and location where the notes were made and if anyone else was present.
8. Pass the notes as soon as possible to the Designated Safeguarding Lead.

### 10.4 Reporting Forms

1. Reporting forms will be readily available to all staff who may require them. Staff should not have to print forms off before being able to complete them.
2. Reporting forms will be located together with the latest copies of Keeping Children Safe in Education, Confidential Reporting Policy and the schools' child protection and safeguarding policy, at various easily accessible points through the school.
3. Annex's 6, 7 & 8 below provides specimen suggested forms, chronologies and skin/body maps for the recording of information.
4. Even where we have a computerised safeguarding system, we will still have paper reporting forms readily available to all staff, so they record concerns as soon as

possible. (For example, where the computer system is 'down' or where the member of staff cannot gain access quickly to record the disclosure immediately.)

5. All paper records will be retained as per the record keeping section below. Where an electronic system is in operation, paper records of any disclosures by a child or record made by a staff member relating to a disclosure will be uploaded and the original paper record also retained.

#### 10.5 Support for staff

1. It is recognised that staff working in a school who have become involved with a child who has suffered harm or appears to be likely to suffer harm may find the situation stressful and upsetting.
2. The school will support such staff by providing an opportunity to talk through their anxieties with the designated safeguarding lead and to seek further support as appropriate. WSCC school staff have access to a free, 24/7 and confidential counselling service, via the employee assistance programme.

#### 10.6 Female Genital Mutilation (FGM)

##### Legal obligation to report acts of Female Genital Mutilation.

1. Female Genital Mutilation (FGM) comprises all procedures involving partial or total removal of the external female genitalia or other injury to the female genital organs. It is illegal in the UK and a form of child abuse with long-lasting harmful consequences.
2. Professionals in all agencies, and individuals and groups in relevant communities, need to be alert to the possibility of a girl being at risk of FGM, or already having suffered FGM.
3. From 31<sup>st</sup> October 2015, regulated health and social care professionals and teachers in England and Wales must report 'known' cases of FGM in under 18's which they identify in the course of their professional work to the police.
4. Where a case of FGM is suspected or if you believe a child / young person is about to suffer FGM or is about to leave the country in order to suffer FGM – we will call the police immediately, and by 999 when it is an emergency.
5. Irrespective of calling the police we will also immediately refer the matter to IFD, including out of hours where relevant.
6. The Home Office has published procedural information on the duty to help health and social care professionals, teachers and the police understand: the legal requirements placed upon them, a suggested process to follow, and an overview of the action which may be taken if they fail to comply with the duty. It also aims to give the police an understanding of the duty and the next steps upon receiving a report.
7. Guidance can be obtained here;
  - [Home Office: Mandatory Reporting of FGM – procedure information](#)
  - [FGM Mandatory Reporting Fact Sheet](#)
  - [FGM Reporting Flowchart for under 18's](#)

## 11. REFERRING A CHILD TO THE INTEGRATED FRONT DOOR (IFD)

11.1 If a child is in immediate danger the police must be called by dialling 999.

11.2 If a member of staff has concerns about a child;

1. The member of staff will report their concerns to the Designated Safeguarding Lead or in their absence, the Deputy Safeguarding Lead.
2. The Designated Safeguarding Lead will refer to the West Sussex Safeguarding Partnership Continuum of Need/Threshold Guidance<sup>17</sup> and decide whether the concerns should be referred to the Integrated Front Door (IFD). If there are grounds to indicate the child has or is likely to suffer actual or suspected significant harm, then a referral will be made to the IFD using the relevant online form<sup>18</sup>. Where concerns are urgent, complex or where it is unclear whether a referral should be made, the Designated Safeguarding Lead should contact the IFD by telephone for advice on 01403 229900, or out of hours on 0330 222 6664.
3. If it is decided to make a referral to the IFD, parents must be contacted to inform them that the referral is being made unless to do so would place the child at further risk of harm or could impact on a police investigation (the IFD is able to provide advice on this).
4. If it is considered likely that **by informing parents/carers of the referral will increase the risk** to the child (ren) advice MUST BE SOUGHT FROM IFD before INFORMING, the PARENT/CARER.
5. The steps outlined in **section 23 below, 'Dealing with a Disclosure'**, will be followed by staff members to record details of any concerns which must be done as soon as possible and on the same day. The signed and dated recording must be a clear, precise, factual account of the observations.
6. Where IFD have been contacted for advice and indicate a referral should be made, the Designated Safeguarding Lead will ensure the correct online forms at point 1 in this section above are completed immediately.
7. The school child protection records must reflect who was spoken to at IFD along with the time and date of that contact. The school child protection records must also clearly record any advice given and what steps the school have taken. This will include where there are disagreements between school and IFD and will clearly indicate what next steps the school is taking to resolve the disagreement.

### 11.3 Information Sharing

1. Our school will comply with the information sharing aspects of KCSiE 2022 – which are outlined at para 2

---

<sup>17</sup> West Sussex Safeguarding Partnership Continuum of Need / Threshold Guidance found <https://www.westsussexscp.org.uk/professionals/working-together/west-sussex-continuum-of-need-threshold-guidance>

<sup>18</sup> <https://www.westsussex.gov.uk/education-children-and-families/keeping-children-safe/raise-a-concern-about-a-child/>

2. Information sharing is vital in identifying and tackling all forms of abuse and neglect, and in promoting children's welfare, including their educational outcomes. Schools have clear powers to share, hold and use information for these purposes.
3. As part of meeting a child's needs, it is important for governing bodies and proprietors to recognise the importance of information sharing between practitioners and local agencies. This should include ensuring arrangements are in place that set out clearly the processes and principles for sharing information within the school or college and with children's social care, the safeguarding partners, other organisations, agencies, and practitioners as required.
4. School staff should be proactive in sharing information as early as possible to help identify, assess, and respond to risks or concerns about the safety and welfare of children, whether this is when problems are first emerging, or where a child is already known to the local authority children's social care.
5. It is important that governing bodies and proprietors are aware that among other obligations, the Data Protection Act 2018, and the UK General Data Protection Regulation (UK GDPR) place duties on organisations and individuals to process personal information fairly and lawfully and to keep the information they hold safe and secure.
6. Governing bodies and proprietors should ensure relevant staff have due regard to the relevant data protection principles, which allow them to share (and withhold) personal information, as provided for in the Data Protection Act 2018 and the UK GDPR. This includes:
  - a) Being confident of the processing conditions which allow them to store and share information for safeguarding purposes, including information, which is sensitive and personal, and should be treated as 'special category personal data'.
  - b) Understanding that 'safeguarding of children and individuals at risk' is a processing condition that allows practitioners to share special category personal data. This includes allowing practitioners to share information without consent where there is good reason to do so, and that the sharing of information will enhance the safeguarding of a child in a timely manner, but it is not possible to gain consent, it cannot be reasonably expected that a practitioner gains consent, or if to gain consent would place a child at risk. (Para 31 KCSiE 2022)
  - c) For schools, not providing pupils' personal data where the serious harm test under the legislation is met. For example, in a situation where a child is in a refuge or another form of emergency accommodation, and the serious harms test is met, they must withhold providing the data in compliance with schools' obligations under the Data Protection Act 2018 and the UK GDPR. Where in doubt schools should seek independent legal advice.
7. The Data Protection Act 2018 and UK GDPR do not prevent the sharing of information for the purposes of keeping children safe. Fears about sharing information must not be allowed to stand in the way of the need to safeguard and promote the welfare and protect the safety of children.
8. Further details on information sharing can be found<sup>19</sup>:

---

<sup>19</sup> <https://www.gov.uk/government/publications/working-together-to-safeguard-children--2>

- in Chapter one of Working Together to Safeguard Children, which includes a myth-busting guide to information sharing
  - Information Sharing: Advice for Practitioners Providing Safeguarding Services to Children, Young People, Parents and Carers. The seven golden rules for sharing information will be especially useful
  - The Information Commissioner's Office (ICO), which includes ICO UK GDPR FAQs and guidance from the department
  - Data protection: toolkit for schools - Guidance to support schools with data protection activity, including compliance with the UK GDPR.
9. If in doubt whether to share information we will take advice from IFD. Further advice on the seven golden rules for sharing information for staff can be found in the following document, *Advice for practitioners providing safeguarding services to children, young people, parents and carers and guidance*, which can be accessed [https://assets.publishing.service.gov.uk/government/uploads/system/uploads/attachment\\_data/file/721581/Information\\_sharing\\_advice\\_practitioners\\_safeguarding\\_services.pdf](https://assets.publishing.service.gov.uk/government/uploads/system/uploads/attachment_data/file/721581/Information_sharing_advice_practitioners_safeguarding_services.pdf)
  10. The Data Protection Act 2018 and GDPR do not prevent the sharing of information for the purposes of keeping children safe. Fears about sharing information must not be allowed to stand in the way of the need to promote the welfare and protect the safety of children, which must always be the paramount concern.
  11. Effective sharing of information is essential for early identification of need, assessment and service provision to keep children safe.
  12. Practitioners should be proactive in sharing information as early as possible to help identify, assess and respond to risks or concerns about the safety and welfare of children, whether this is when problems are first emerging, or where a child is already known to local authority children's social care (e.g., they are being supported as a child in need or have a child protection plan). Practitioners should be alert to sharing important information about any adults with whom that child has contact, which may impact the child's safety or welfare.
  13. Information sharing is also essential for the identification of patterns of behaviour when a child has gone missing, when multiple children appear associated to the same context or locations of risk, or in relation to children in the secure estate where there may be multiple local authorities involved in a child's care. It will be for local safeguarding partners to consider how they will build positive relationships with other local areas to ensure that relevant information is shared in a timely and proportionate way.
  14. If a practitioner has concerns about a child's welfare and considers that they may be a child in need or that the child has suffered or is likely to suffer significant harm, then they should share the information with local authority children's social care and/or the police. All practitioners should be particularly alert to the importance of sharing information when a child moves from one local authority into another, due to the risk that knowledge pertinent to keeping a child safe could be lost.
  15. Practitioners must have due regard to the relevant data protection principles which allow them to share personal information, as provided for in the Data Protection Act 2018 and the General Data Protection Regulation (GDPR). To share information effectively: it is important to understand the processing conditions under the Data Protection Act 2018 and the GDPR which allow them to store and share information for safeguarding purposes, including information, which is sensitive and personal, and should be treated as 'special category personal data'.

16. We are aware of the [Data protection toolkit for schools](#) which we will use to assist in complying with GDPR.

#### 11.4 Taking Responsibility

1. Staff should not assume a colleague or another professional from another organisation is making a referral. It is the duty of the Designated Safeguarding Lead to take action and ensure information is shared in order to keep a child safe.
2. In addition, our school will ensure that all staff, including volunteers and governors, will have confidence and know how to contact IFD in the unlikely event that the DSL or deputy are not available. This will also be the case where any member of staff is concerned that the DSL or deputy is not taking concerns seriously.
3. In addition, we encourage all members of staff, including volunteers and governors to recognise and respond to safeguarding concerns which occur in the community and are nothing to do with school, in the appropriate manner by contacting IFD, the police or the NSPCC.

#### 11.5 Early Help

1. The Early Help Service within West Sussex is committed to providing a consistent and accessible family focused service for children, young people, and their families. Through its supporting family's approach to earliest help Early Help aims to ensure that children's needs are met as early as possible, supporting families to resolve issues before they become harder to reverse. Early Help is able to achieve this through its work with a range of partners, with Schools being critical in identifying early indicators where children, young people and families may benefit from additional support.

#### 11.6 Dedicated Schools Teams are in place in each of the six district areas across West Sussex. The team will offer:

- a) A named link worker for every school and will be working with a cluster of schools in the area.
- b) Clear contact details for the leadership team should schools wish to escalate a concern
- c) A flexible response as an issue emerges and regular meetings to discuss worries at schools' request, concerns especially focused on key areas such as school attendance, transition points, targeted family support, neglect, physical and mental health, emotional wellbeing and SEND.
- d) Help schools to know the support available locally through Early Help or the community and help connect to it.
- e) Help with threshold decisions, escalating concerns and connections with social care.
- f) Provide, information, advice and guidance and help for families to access crisis support.
- g) Help lead professionals, with Team Around the Family meetings, professionals' meetings, provide short intervention with children, young people, and parent/carers, signposting and linking to other local partners providing support, working alongside wider educational colleagues.
- h) Provide training on the use of Holistix.

## 11.7 Targeted Family Support

1. Early Help will support schools to identify the best way forward for children and families with slightly more complex needs, where further targeted intervention and support is required. Support to the school can include providing advice and signposting to the most relevant support services and partners, supporting schools to build confidence referring to appropriate agencies.
2. For children, young people and families featuring any of the following features then a more targeted level of support maybe required, which could be led by the school or another partner or service. Link workers can support schools with how to complete relevant referrals, which can include referral to the IFD with the appropriate consent from parent/carer, including:
  - a) Multiple complex issues that impact on the children and family stability
  - b) Entrenched or inter-generational patterns of behaviour
  - c) Issues that affect the whole family
  - d) A history of children social care (CSC) intervention or police involvement
  - e) A coordinated multiagency approach is required
  - f) Risk of escalating to level 4 intervention including risk of family breakdown
  - g) Adults out of work or at risk of financial exclusion and young people at risk of worklessness.
  - h) Children who have not been attending school regularly
  - i) Parents and children involved in crime and anti-social behaviour
  - j) Parents and children with a range of health problems
  - k) Families affected by domestic violence and abuse
3. Our school will work with our families, parents, and carers, share our concerns with them, work at the earliest opportunity and work with our dedicated schools team link help worker in order to maximise the offer for those children who may benefit from additional support.
4. Our school will refer to the Integrated Front Door any children/young people that require targeted family support.
5. In our school the Designated Safeguarding Lead will have oversight of all children on Early Help Plans and will regularly review progress and any changes in risk.

## 11.8 West Sussex Safeguarding Children Partnership Continuum of Need

Our school will use the Threshold Guidance<sup>20</sup> to inform our decision making and which referral pathway to take.

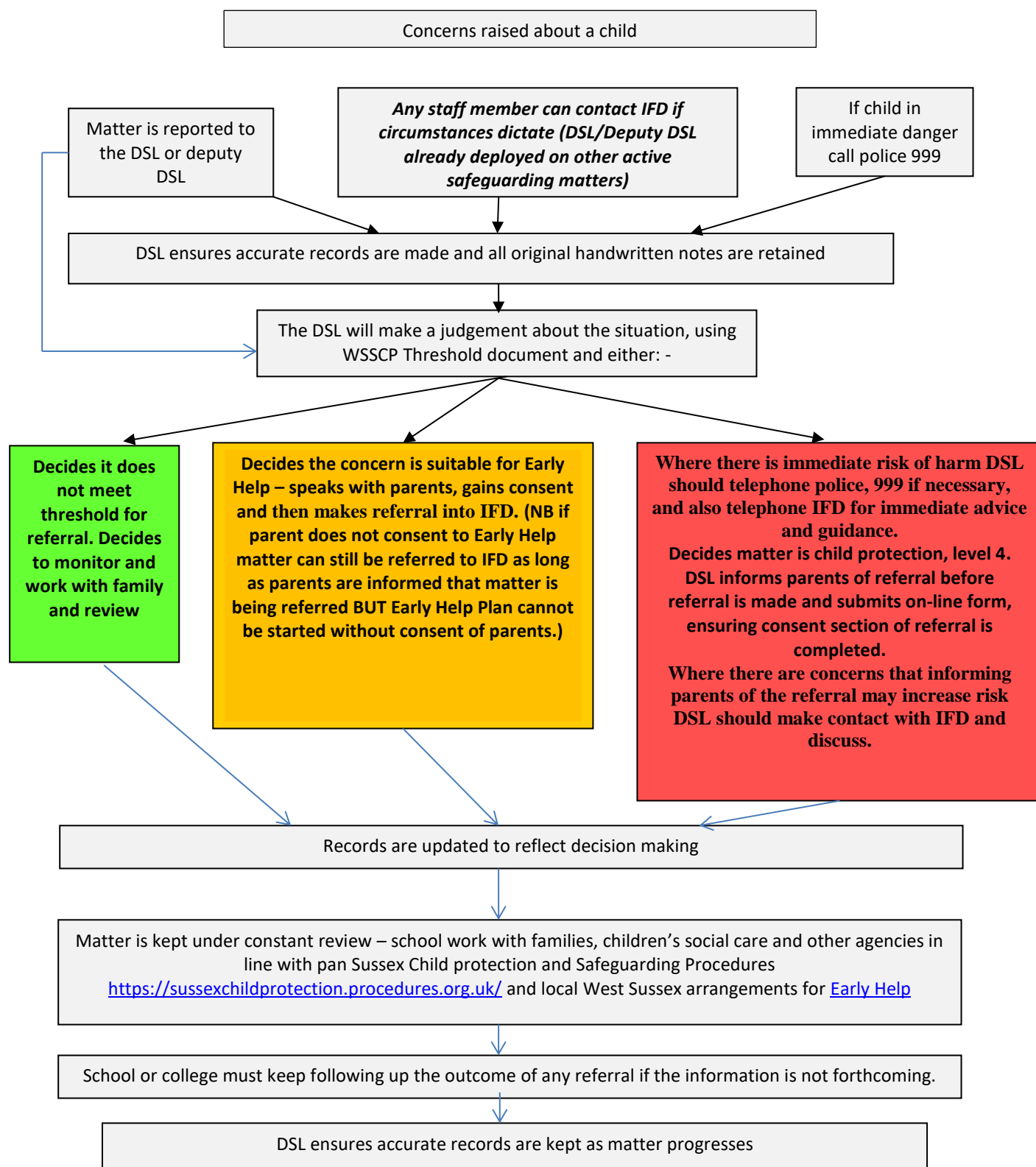
Referral Pathway:

---

<sup>20</sup> <http://www.westsussexscb.org.uk/professionals/working-together/west-sussex-continuum-of-need-threshold-guidance>



## 11.9 Flowchart for child protection procedures for schools and colleges





## 12. RECORD KEEPING

### 12.1 Child Protection Files

1. We recognise that KCSiE 2022 makes it clear that **All** concerns, discussions, and decisions made, and the reasons for those decisions, should be recorded in writing. Information should be kept confidential and stored securely. It is good practice to keep concerns and referrals in a separate child protection file for each child. And,
  - That Records should include:
  - a clear and comprehensive summary of the concern.
  - details of how the concern was followed up and resolved;
  - a note of any action taken, decisions reached and the outcome.
2. If in doubt about recording requirements, staff should discuss with the designated safeguarding lead (or deputy).
3. In our school we recognise the fundamental safeguarding practice of accurately recording safeguarding information. In our school:
4. Records kept for child protection purposes will be kept securely, separate from other records, and accessed only by those who need to do so for safeguarding and/or monitoring purposes.
5. Each child will have a separate record.
6. Each record will be accurate, legible and entries made as soon as practicable after a concern is raised.
7. Each recorded concern will have
  - a) a clear and comprehensive record of the concern,
  - b) details of how the concern was followed up and
  - c) a clear record of any action taken, decisions reached and the outcome, including any challenge / escalation to any other agency.
8. It is anticipated that more than one member of staff will have access to records and be able to make entries into a child's safeguarding records. Whether there is any doubt about whether to make a record or not staff must consult with the DSL.
9. Where computer systems are used, staff will still have access to paper forms so immediate conversations with a child/body map drawing etc. can be made contemporaneously.
10. Any paper records generated at 4 above will be retained within the file, even where they have been scanned to a computer record.
11. Where there is more than one sibling, each sibling will have their own record, cross-referenced where necessary to their siblings.
12. Each file will have a chronology to enable assessment, provide an overview and enable fast time assessment of previous activity.
13. Each file will have an up-to-date contact number for other key professionals.

### 12.2 When a child moves school

1. Any child protection files relating to that child will be transferred / retained in accordance with guidelines which can be found in the Information Management Toolkit for Schools found <https://irms.org.uk/page/SchoolsToolkit>
2. In line with statutory guidance within KCSiE, where children leave the school, the Designated Safeguarding Lead will ensure their child protection file is transferred to the new school or college as soon as possible, and within five days, ensuring secure transit, and confirmation of receipt should be obtained.
3. **For schools, this should be transferred separately from the main pupil file.** Receiving schools and colleges should ensure key staff such as designated safeguarding leads and SENCOs or the named person with oversight for SEN in a college, are aware as required.
4. In addition to the child protection file, the Designated Safeguarding Lead will also consider if it would be appropriate to share any information with the new school or college in advance of a child leaving. For example, information that would allow the new school or college to continue supporting victims of abuse and have that support in place for when the child arrives.
5. In accordance with the Information Management Toolkit for Schools, when a child moves from one school to another, the file will move with them. (See Annex 11 below for a specimen file transfer form.) The sending school should not copy nor retain the child protection file unless they are to be used in ongoing proceedings. (Noting the exceptions when the child moves to an independent school or post 16 education provision)

### 13. LOCAL AUTHORITY DESIGNATED OFFICER (LADO)

#### 13.1 West Sussex County Council Designated Officer (LADO) Contact Details

The LADO's for West Sussex area:

- Miriam WILLIAMS
- Donna TOMLINSON

LADO should be contacted either by email: [LADO@westsussex.gov.uk](mailto:LADO@westsussex.gov.uk) or by phone, LADO Consultation Contact No. 0330 222 6450 (9.00am – 5.00pm)

#### 13.2 West Sussex County Council Designated Officer Service: Guidance & Information

Full guidance, is found here <https://www.westsussexscp.org.uk/professionals/professional-disagreements-and-concerns/ladoinformation> regarding the Designated Officer Service can be found on the West Sussex Safeguarding Children Partnership (WSSCP) <sup>21</sup>

#### 13.3 Those who may pose a risk of harm to children and young people

1. Our school will follow the guidance as set out in Part 4 of Keeping Children Safe in Education 2022. We will follow that guidance where it is alleged that anyone working in the school or a college that provides education for children under 18 years of age, including supply teachers, volunteers and contractors has:

<sup>21</sup> WSSCP can be found [HERE](#)

- i. Behaved in a way that has, or may have harmed a child.
  - ii. Possibly committed a criminal offence against/related to a child.
  - iii. Behaved towards a child or children in a way which indicates s/he would pose a risk of harm if they work regularly or closely with children;
  - iv. behaved or may have behaved in a way that indicates they may not be suitable to work with children.
2. We recognise that point iv above includes behaviour that may have happened outside of school or college, that might make an individual unsuitable to work with children.
  3. As a school we will appoint a case manager to lead any investigation. If the allegation relates to a member of staff the headteacher will be the case manager. If the allegation is regarding the headteacher, then the Chair of Governors will be the case manager, as appropriate.

#### 13.4 The initial response to an allegation

1. Where there a child has been harmed, where there is an immediate risk of harm to a child or if the situation is an emergency, we will contact children's social care and as appropriate the police immediately.
2. We recognise there are two aspects to consider when an allegation is made:
  - a) **Looking after the welfare of the child** - the designated safeguarding lead is responsible for ensuring that the child is not at risk and referring cases of suspected abuse to the Integrated Front Door
  - b) **Investigating and supporting the person subject to the allegation** - the case manager should discuss with the LADO, the nature, content, and context of the allegation, and agree a course of action.
3. When dealing with allegations, we will follow the guidance contained within <https://www.westsussexscp.org.uk/professionals/professional-disagreements-and-concerns/ladoinformation>

#### 13.5 Informing the Individual

- 1) When to inform the individual of the allegation should be considered carefully on a case-by-case basis, with guidance as required from the LADO, and if appropriate children's social care and the police

#### 13.6 LADO / Case Manager and investigation

- 1) As a school we are familiar with Part Four of KCSiE 2022. We will follow the guidance in Part Four and guidance from LADO when considering issues such as suspension, use of independent investigator, and timeliness of any investigations.

#### 13.7 School Complaints

1. Complaints by parents about any aspect of school MUST be reviewed to ensure there are no allegations against staff, including volunteers, contained within the complaint which require referral to LADO.

#### **13.8 Allegations against member of staff, including supply staff, contracted staff, volunteers, and school governors**

1. An immediate written record of the allegation using the informant's words including time, date, and place where the alleged incident took place, brief details of what happened, what was said and who was present will be made.
2. This record should be signed, dated, and immediately passed on to the Headteacher / Chair of Governors.
3. The recipient of an allegation must not unilaterally determine its validity and failure to report it in accordance with procedures is a potential disciplinary matter. The Headteacher or Chair will not investigate the allegation themselves, or take written or detailed statements, but will assess and decide whether to refer the concern to the LADO. If there is any doubt as to whether to refer, advice should be taken from the LADO.
4. If there are concerns that a child is at risk, the matter must be immediately reported to IFD.
5. Any records generated during such matters must be retained securely, away from other child protection and personnel records and only be accessed by those who need to for investigation/review purposes.
6. Guidelines contained within the Pan Sussex Child Protection and Safeguarding Procedures in respect of managing allegations made against people who work or volunteer with children, <https://sussexchildprotection.procedures.org.uk/tkyphy/children-in-specific-circumstances/allegations-against-people-who-work-with-care-for-or-volunteer-with-children> must be followed on each occasion. If there is any doubt, then advice must be taken from the LADO.
7. Where an allegation is made against a supply teacher or contracted staff, whilst we recognise we are not the employer of supply teachers or contracted staff, we will ensure allegations are dealt with properly. In no circumstances will we decide to cease to use a supply teacher due to safeguarding concerns, without finding out the facts and liaising with the LADO to determine a suitable outcome.
8. Should an allegation be made regarding a school governor we will take advice from LADO and the Local Authority Governor Services team.

#### **13.9 Non recent allegations**

1. We will refer any non-recent allegation to the LADO, irrespective of how long ago it occurred. We will also encourage the person making the allegation to report the matter to the police if a criminal offence has or could have been committed.

#### **13.10 Supporting those involved**

1. When an allegation or safeguarding concern is being investigated it is likely to be a very stressful experience for the adult subject of the investigation, and potentially for their family members. We recognise it is important, as the employer, that we offer

appropriate welfare support at such a time and recognises the sensitivity of the situation. We recognise information is confidential and should not ordinarily be shared with other staff or with children or parents who are not directly involved in the investigation.

2. We recognise we have a duty of care to our employees and as such we will:

- manage and minimise the stress caused by the allegation.
- inform the individual as soon as possible, explaining the likely course of action, guided by the LADO, and the police where necessary.
- advise the individual to contact their trade union representative, or a colleague for support.
- appoint a named representative to keep the person informed about progress of the case.
- provide access to counselling or medical advice where appropriate. (For staff in schools maintained by the local authority this may include support via the local authority's occupational health arrangements) and
- not prevent social contact with work colleagues and friends, when staff are suspended, unless there is evidence to suggest this may prejudice the gathering of evidence.

#### **13.11 Informing Parents or carers of the child involved**

1. Parents / carers should formally be told about the allegation as soon as possible. The case manager will liaise with the LADO, and where appropriate children's social care and police on what information can be disclosed.
2. As a school we will follow KCSiE 2022 when informing and updating parents. We will follow those paras regarding the need for confidentiality and where relevant outline to any party, including parents and carers the restrictions imposed by The Education Act 2011, amended the Education Act 2002, regarding reporting restrictions. These provisions made it an offence (except in the limited circumstance expressly permitted by the legislation), for any person to publish any material that may lead to the identification of a teacher in a school who has been accused by, or on behalf of, a child from the same school (where that identification would identify the teacher as the subject of the allegation).

#### **13.12 Allegation's outcomes**

1. We will follow KCSiE 2022, working in consultation with LADO and other agencies where appropriate.

#### **13.13 Record keeping, references and learning lessons**

1. We will maintain records, provide references, and review the case to ensure any learning is identified and enacted as per KCSiE 2022.

#### **13.14 Concerns that do not meet the harm threshold for referral to LADO**

1. We recognise that KCSiE 2022 has introduced a specific section (Section Two of Part Four) regarding how to respond to concerns that do not meet the harm threshold.

2. The term 'low-level' concern does not mean that it is insignificant, it means that the behaviour towards a child does not meet the threshold for formal referral to LADO. A low-level concern is any concern – no matter how small, and even if no more than causing a sense of unease or a 'nagging doubt' - that an adult working in or on behalf of the school or college may have acted in a way that:
  - is inconsistent with the staff code of conduct, including inappropriate conduct outside of work; and
  - does not meet the allegations threshold or is otherwise not considered serious enough to consider a referral to the LADO
3. A low-level concern is any concern – no matter how small, and even if no more than causing a sense of unease or a 'nagging doubt' - that an adult working in or on behalf of the school or college may have acted in a way that:
  - a) is inconsistent with the staff code of conduct, including inappropriate conduct outside of work and
  - b) does not meet the harm threshold or is otherwise not serious enough to consider a referral to the LADO.
  - c) Examples of such behaviour could include, but are not limited to:
  - d) being over friendly with children
  - e) having favourites
  - f) taking photographs of children on their mobile phone, contrary to school policy
  - g) engaging with a child on a one-to-one basis in a secluded area or behind a closed door, or
  - h) humiliating pupils.
4. Such behaviour can exist on a wide spectrum, from the inadvertent or thoughtless, or behaviour that may look to be inappropriate, but might not be in specific circumstances, through to that which is ultimately intended to enable abuse.
5. Low-level concerns may arise in several ways and from a number of sources. For example: suspicion; complaint; or disclosure made by a child, parent, or other adult within or outside of the organisation; or as a result of vetting checks undertaken.
6. It is crucial that all low-level concerns are shared responsibly with the right person and recorded and dealt with appropriately. Ensuring they are dealt with effectively should also protect those working in or on behalf of schools and colleges from becoming the subject of potential false low-level concerns or misunderstandings.
7. For such cases, we will follow guidance within KCSiE 2022, part four.
8. Any staff member who has a low-level concern should report those concerns to the headteacher. Where the concerns relate to the headteacher the concerns should be reported to the chair of governors.
9. We recognise that what may appear to be low level concerns can actually relate to serious / significant allegations. As such, where there is any room for doubt, we will consult with the LADO.

### 13.15 Low level concerns and staff behaviour policy

1. We will ensure that all staff are regularly informed of our staff behaviour policy / code of conduct and updates thereof.
2. We will incorporate low level concerns as an extension of our staff behaviour policy / code of conduct.

#### 13.16 What staff should do if they have concerns about safeguarding practices within the school or college

1. All staff and volunteers should feel able to raise concerns about poor or unsafe practice and potential failures in the school or college's safeguarding regime and know that such concerns will be taken seriously by the Senior Leadership Team.
2. Appropriate whistleblowing procedures, which are suitably reflected in staff training and staff behaviour policies, should be in place for such concerns to be raised with the school's Senior Leadership Team.
3. Where a staff member feels unable to raise an issue with their employer or feels that their genuine concerns are not being addressed, other whistleblowing channels may be open to them, advice can always be taken from LADO.

#### 13.17 Whistleblowing/Confidential reporting

1. We will ensure that all staff members are aware of their duty to raise concerns, where they exist, about the actions or attitudes of colleagues. If necessary, the member of staff can speak with the Headteacher or with the LADO.
2. We will ensure staff should be aware of and know how to access West Sussex Confidential Reporting Policy,  
[https://www.proceduresonline.com/westsussex/cs/p\\_whistleblowing.html#how-to-raise-concern](https://www.proceduresonline.com/westsussex/cs/p_whistleblowing.html#how-to-raise-concern)
3. Further assistance for staff to raise concerns can be accessed by calling the NSPCC whistleblowing helpline on 0800 028 0285 or visiting the  
<https://www.nspcc.org.uk/keeping-children-safe/reporting-abuse/dedicated-helplines/whistleblowing-advice-line/>

## 14. SPECIAL EDUCATIONAL NEEDS (SEN) & DISABILITIES

### 14.1 Special Considerations

As a school, we are aware that children with SEN and disabilities can face additional safeguarding challenges and expect all staff to recognise:

- i. Assumptions that indicators of possible abuse such as behaviour, mood and injury relate to the child's disability without further exploration.
- ii. Being more prone to peer group isolation than other children.
- iii. The potential for children with SEN and disabilities being disproportionately impacted by behaviours such as bullying, without outwardly showing any signs; and

- iv. Communication barriers and difficulties in overcoming these barriers.

## 14.2 SEN & D Support

To address these additional challenges, our schools will consider extra pastoral support for children with SEN and disabilities.

## 15. CHILDREN WHO ARE LESBIAN, GAY, BI, OR TRANS (LGBT)

1. As a governing body we recognise the fact that a child or a young person may be LGBT is not in itself an inherent risk factor for harm. However, children who are LGBT can be targeted by other children. In some cases, a child who is perceived by other children to be LGBT (whether they are or not) can be just as vulnerable as children who identify as LGBT.
2. Risks can be compounded where children who are LGBT lack a trusted adult with whom they can be open. It is therefore vital that staff endeavour to reduce the additional barriers faced and provide a safe space for them to speak out or share their concerns with members of staff.
3. LGBT inclusion is part of the <https://www.gov.uk/government/publications/relationships-education-relationships-and-sex-education-rse-and-health-education> curriculum and we recognise there is a range of support available to help schools counter homophobic, biphobic and transphobic bullying and abuse.

## 16. CHILDREN LOOKED AFTER / PREVIOUSLY LOOKED AFTER

1. As the Governing Body of this school we will ensure that staff have the skills, knowledge and understanding to keep looked after children, and children who have previously been looked after, and children who have or have ever had social care involvement safe.
2. In particular, we will ensure that appropriate staff have the information they need in relation to a child's looked after legal status (whether they are looked after under voluntary arrangements with consent of parents, or on an interim or full care order) and the child's contact arrangements with birth parents or those with parental responsibility.
3. We will also ensure staff have information about the child's care arrangements and the levels of authority delegated to the carer by the authority looking after him/her. The designated safeguarding lead and designated teacher should have details of the child's social worker and the name of the virtual school head in the authority that looks after the child.
4. We recognise previously looked after child potentially remains vulnerable and all staff should have the skills, knowledge and understanding to keep previously looked after children safe. When dealing with looked after children and previously looked after children, it is important that all agencies work together and prompt



action is taken when necessary to safeguard these children, who are a particularly vulnerable group.

5. We recognise that we have a responsibility to safeguard and monitor the educational outcomes and wellbeing of children with or who have ever had social care involvement.
6. All staff will be provided with an appropriate level of information to understand a child's particular circumstances and vulnerabilities in order to respond and meet their needs appropriately. Staff will work with Social Care colleagues to provide and receive the information necessary to enable effective monitoring and reporting by all professionals involved.

#### **16.1 Designated Teacher for Looked After Children**

1. We recognise as the governing body we must appoint a designated teacher and should work with local authorities to promote the educational achievement of registered pupils who are looked after. With the commencement of sections 4 to 6 of the Children and Social Work Act 2017, we recognise designated teachers have responsibility for promoting the educational achievement of children who have left care through adoption, special guardianship or child arrangement orders or who were adopted from state care outside England and Wales. The designated teacher must have appropriate training and the relevant qualifications and experience.
2. The designated teacher for looked after children in our school is Adrian Bates-Holland (until January 2023) / Kamilya Stedman (January 2023 onwards).
3. We will ensure our designated teacher will have appropriate training, relevant qualifications, and experience. We will ensure the designated teacher is aware of the statutory guidance <https://www.gov.uk/government/publications/designated-teacher-for-looked-after-children>
4. Our school will work with the Head Teacher of the Virtual School to discuss how the school can best support the child and meet the needs of the child's Personal Education Plan (PEP) and use any additional resources accordingly.
5. We recognise that the virtual school head, following the commencement of sections 4 to 6 of the Children and Social Work Act 2017, virtual school heads have responsibilities towards children who have left care through adoption, special guardianship, or child arrangement orders or who were adopted from state care outside England or Wales.
6. We will pay additional attention to the attendance of children looked after. Where any exclusions are issued for children looked after we will consider whether these are indicative of wider safeguarding concerns and share any concerns with the Head Teacher of the Virtual School and other safeguarding partners as necessary.
7. Previously looked after children potentially remain vulnerable and we will ensure that all staff should have the skills, knowledge and understanding to keep previously looked after children safe. When dealing with Children Looked After and previously looked after children, we will ensure our school works together with other agencies and takes prompt action when necessary to safeguard these children, who are a particularly vulnerable group.

#### **16.2 Care Leavers**

1. Local authorities have on-going responsibilities to the young people who cease to be looked after and become care leavers. That includes keeping in touch with them, preparing an assessment of their needs and appointing a Personal Adviser who develops a pathway plan with the young person. This plan describes how the local authority will support the care leaver to participate in education or training.
3. The Designated Safeguarding Lead in our school will therefore have details of the local authority Personal Adviser appointed to guide and support the care leaver and should liaise with them as necessary regarding any issues of concern affecting the care leaver.
4. The Designated Safeguarding Lead in our school will therefore have details of the local authority Personal Adviser appointed to guide and support the care leaver and should liaise with them as necessary regarding any issues of concern affecting the care leaver.
5. Details of leaving care personal advisors can be found <https://www.westsussex.gov.uk/education-children-and-families/your-space/life/leaving-care-local-offer/>

### 16.3 Virtual School Heads

Virtual school heads manage pupil premium plus for looked after children; they receive this funding based on the latest published number of children looked after by the local authority. Our school recognises the designated teacher will work with the virtual school head to discuss how funding can be best used to support the progress of looked after children in the school and meet the needs identified in the child's personal education plan. The designated teacher should also work with the virtual school head to promote the educational achievement of previously looked after children. In other schools and colleges, an appropriately trained teacher should take the lead.

## 17 CHILDREN POTENTIALLY AT GREATER RISK OF HARM -

### 17.1 As a school we recognise children may need a social worker due to safeguarding or welfare needs.

1. Children may need this help due to abuse, neglect and/or complex family circumstances. A child's experiences of adversity and trauma can leave them vulnerable to further harm, as well as educationally disadvantaged in facing barriers to attendance, learning, behaviour, and mental health.
2. Local authorities should share the fact a child has a social worker, and we recognise that our Designated Safeguarding Lead should hold and use this information so that decisions can be made in the best interests of the child's safety, welfare, and educational outcomes. This should be considered as a matter of routine.
3. As outlined above, we recognise there are clear powers to share this information under existing duties on both local authorities and schools and colleges to safeguard and promote the welfare of children.
4. Where children need a social worker, this should inform decisions about safeguarding (for example, responding to unauthorised absence or missing

education where there are known safeguarding risks) and about promoting welfare (for example, considering the provision of pastoral and/or academic support, alongside action by statutory services).

#### 17.2 As a school we are aware

1. Of the findings from the [Children in Need Review](#), [Improving the educational outcomes for Children in Need of help and protection](#) and the detail contained within [Help, protection, education](#).
2. In our school the Designated Safeguarding Lead will take responsibility in how we can, as a school, assist children who are potentially at greater risk of harm achieve their educational potential.
3. As a Governing Body we will regularly scrutinise educational progress of children who are at greater risk of harm.

### 18 GUIDEBOOK FOR LOCAL PROTOCOLS TO SAFEGUARD OUR CHILDREN

Attached to this policy is a Guidebook which identifies the key areas of safeguarding, as outlined in Keeping Children Safe in Education and other areas of local and national importance and provides the local context to enable schools and colleges to respond effectively. Our school have considered the various areas of this guidebook and have adopted and adapted those areas specific to our setting.

The areas covered in the guidebook are:

#### 18.1 Children requiring mental health support

#### 18.2 Statutory Status – RSHE

#### 18.3 Crimes committed on school premises and when to call the police

#### 18.4 The use of reasonable force in our school

#### 18.5 On-line safety

#### 18.6 Ofsted Inspections

#### 18.7 Boarding and residential schools

#### 18.8 Host Families

#### 18.9 Private Fostering

#### 18.10 Additional Specific Safeguarding Issues:

#### 18.11 Child abduction and community safety incidents

- 18.12 Children in the court system criminal court
- 18.13 Pre-trial therapy
- 18.14 Family court
- 18.15 Children missing education
- 18.16 Absence from school
- 18.17 Elective home education
- 18.18 Child criminal exploitation and child sexual exploitation (CSE)
- 18.19 Concerns a child is being exploited
- 18.20 County lines
- 18.21 Modern slavery and the national referral mechanism
- 18.22 Serious violence
- 18.23 Contextual safeguarding networks
- 18.24 Cybercrime
- 18.25 Domestic abuse
- 18.26 Homelessness
- 18.27 So called honour-based violence (HBV) – including female genital mutilation and forced marriage
- 18.28 Female genital mutilation (FGM)
- 18.29 Legal obligation to report acts of female genital mutilation.
- 18.30 Forced marriage
- 18.31 Preventing radicalisation & the prevent duty
- 18.32 Channel programme – for those at risk of radicalisation
- 18.33 Allegations against other pupils which are safeguarding issues
- 18.34 Children with family members in prison

- 18.35 Other aspects of risk – bullying / emotional health & well-being
- 18.36 Sexual Violence & Sexual Harassment
- 18.37 Allegations against staff records
- 18.38 Managing professional differences & concerns
- 18.39 Adult safeguarding procedures
- 18.40 Annex 2 – copy of annex B KCSiE role of the DSL
- 18.41 List of suggested policies to support safeguarding
- 18.42 WSCC children missing education policy
- 18.43 Specimen concerns recording form
- 18.44 Specimen chronology
- 18.45 Skin / body map
- 18.46 KCSiE part five: sexual violence & sexual harassment
- 18.47 WSCC Briefing – sexual violence and sexual harassment between children in schools and colleges
- 18.48 File sharing & transfer of records forms