

Year 2: Maths Games 1



Missing Number

Fill in the missing number:

$$9 + \boxed{7} = 16$$

Hide
Answers

Missing Number

Fill in the missing number:

$$18 - \boxed{9} = 9$$

Hide
Answers

Missing Number

Fill in the missing number:

$$6 + 5 = 11$$

Hide
Answers

Missing Number

Fill in the missing number:

$$17 - 7 = 10$$

Hide
Answers

True or False

Which **two** sentences are correct?

A A rectangle has four sides of equal length.

B A rectangle has lines of symmetry.

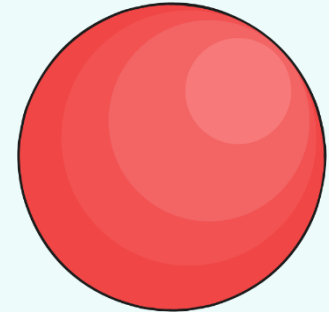
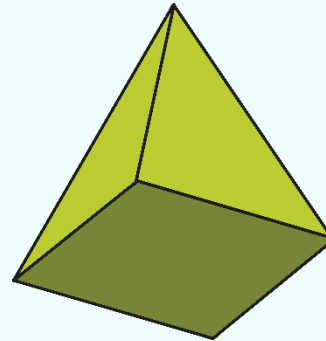
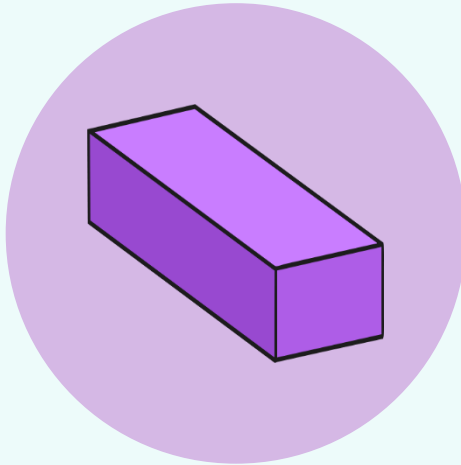
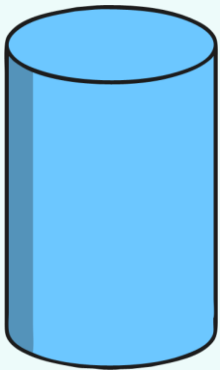
C A rectangle has four corners.

D A rectangle has curved sides.

Hide
Answers

Which Shape?

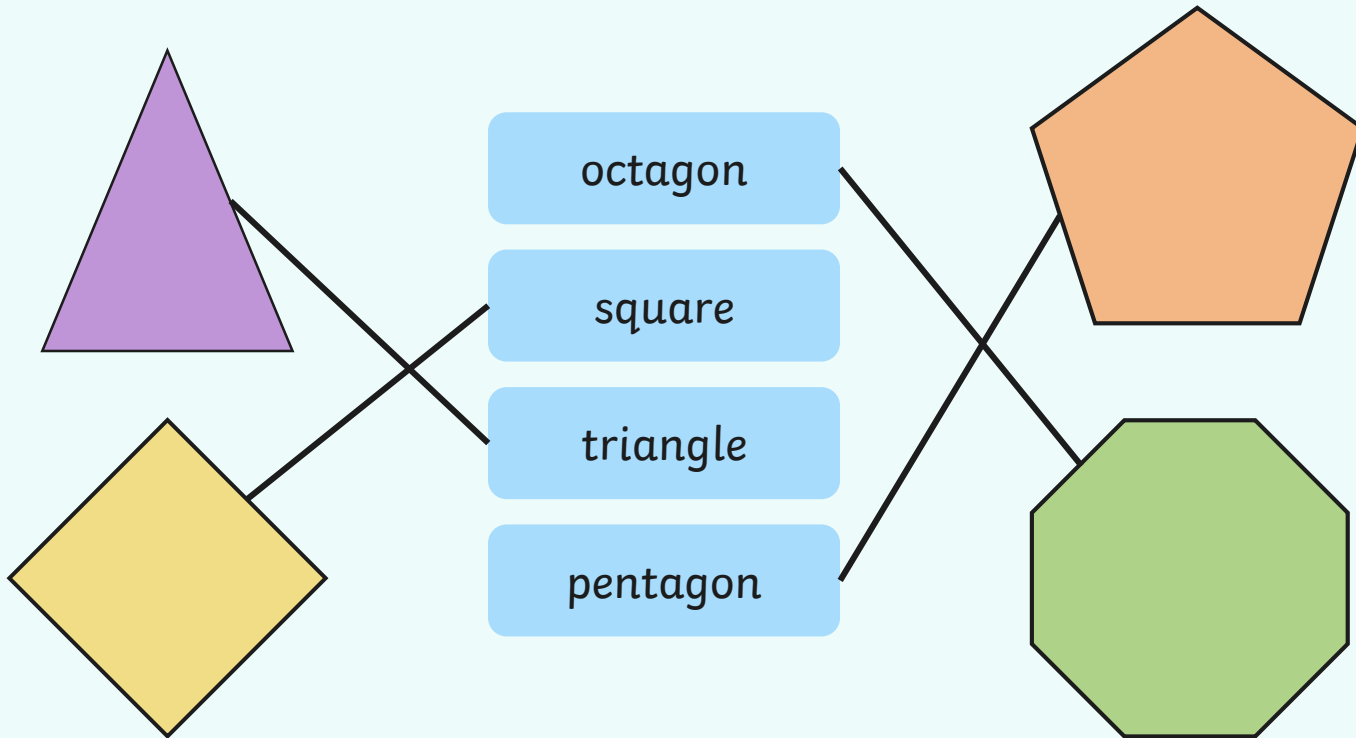
Which shape has **six faces**?



Hide
Answers

Matching

Match each shape to its name:

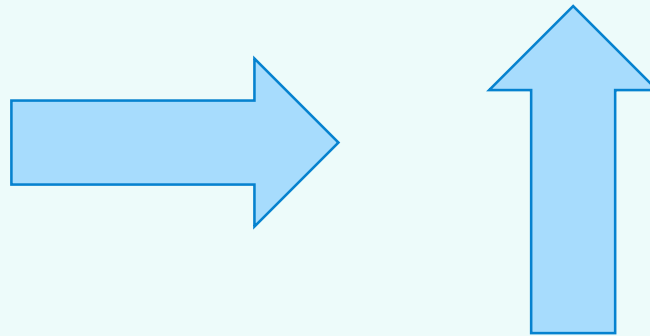


Hide
Answers

Rotation

This arrow has been rotated **anticlockwise**. How far has the arrow been rotated?

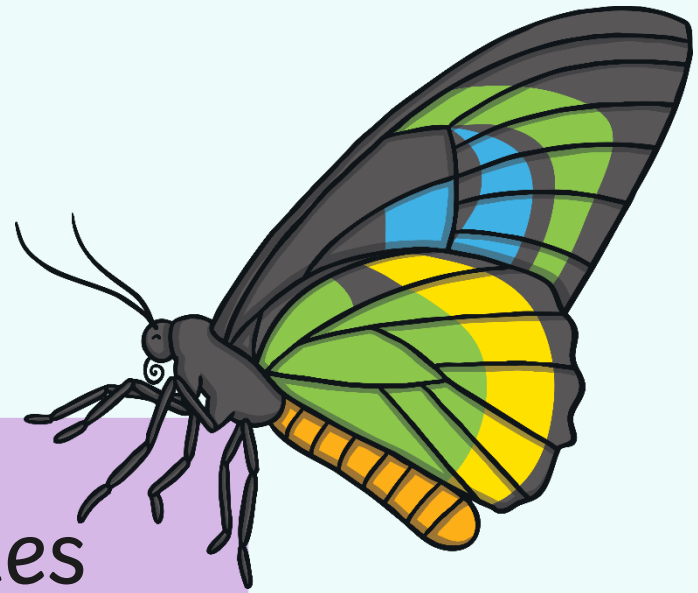
- A** quarter turn
- B** half turn
- C** three-quarter turn
- D** full turn



Hide
Answers

Word Problems

There are 20 butterflies on a bush. 8 butterflies fly away. How many are left?

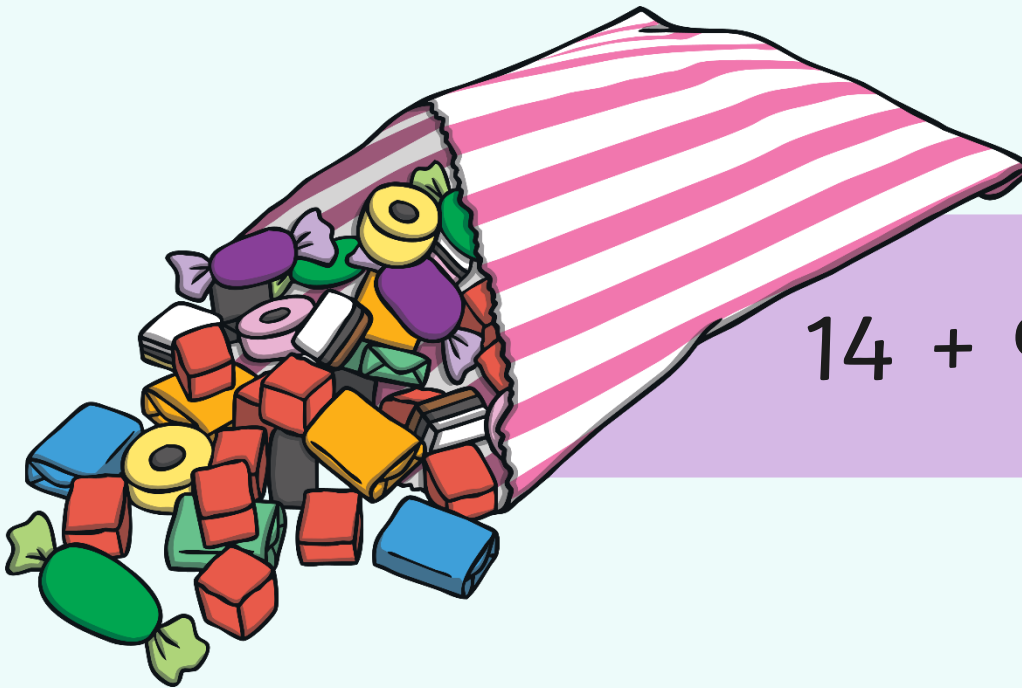


$$20 - 8 = 12 \text{ butterflies}$$

Hide
Answers

Word Problems

James has a bag of sweets. He gives 9 sweets to Ali. He has 14 sweets left. How many sweets did he have to start with?

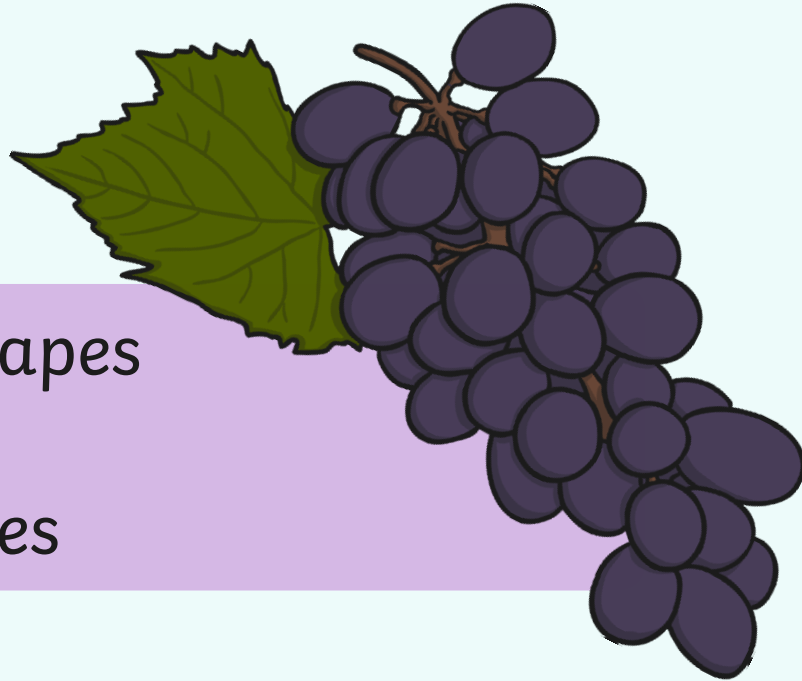


$$14 + 9 = 23 \text{ sweets}$$

Hide
Answers

Word Problems

There are 25 grapes on a bunch. Dan takes 7 grapes. Mo takes 9 grapes. How many grapes are left on the bunch?



$$25 - 7 - 9 = 9 \text{ grapes}$$

or $7 + 9 = 16$

$$25 - 16 = 9 \text{ grapes}$$

Hide
Answers

Word Problems

Ellie has 19 beads altogether. She has 6 in one hand. How many does she have in the other hand?

$$19 - 6 = 13$$

beads



Hide
Answers

How Much?

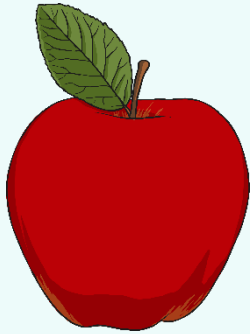
How much does the butter weigh?



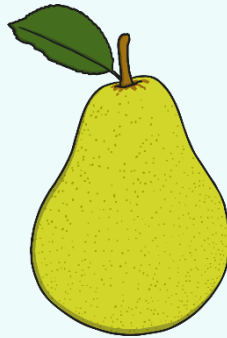
Hide
Answers

More than, Less than

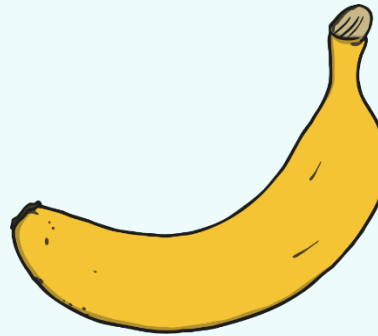
Here is the weight of some different fruit.



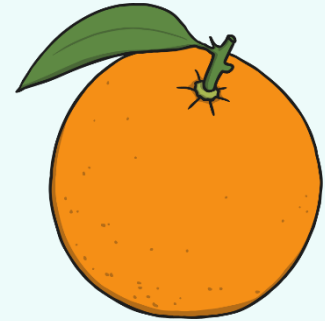
50g



65g



100g



120g

Use these symbols to fill in the boxes: < > =

orange

>

banana

pear

>

apple

2 apples

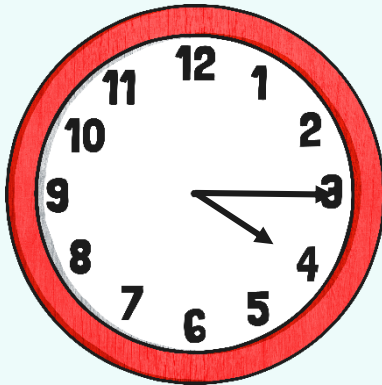
=

banana

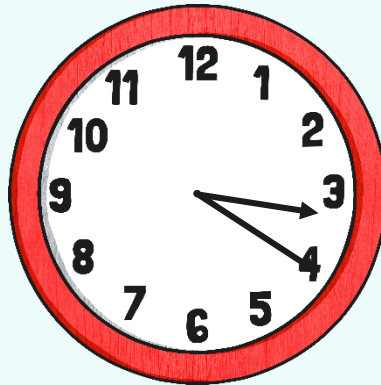
Hide
Answers

Time to Tell the Time

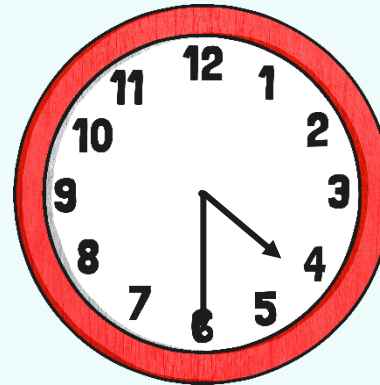
Which clock shows **twenty past three**?



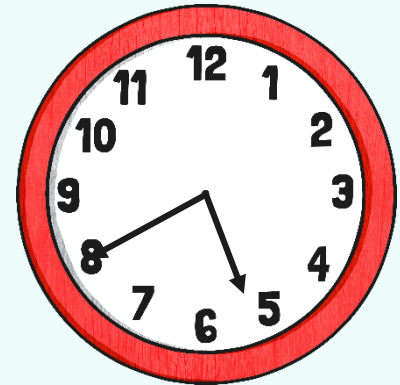
A



B



C



D

Hide
Answers

Word Problems

Lily starts school at 9 o'clock. She arrives 15 minutes early. What time does she arrive at school?

She arrives at 8.45 or quarter to 9.



Hide
Answers

How Many?

- A** How many seconds in a minute?
- B** How many minutes in one hour?
- C** How many hours in one day?
- D** How many seconds in two minutes?
- E** How many hours in two days?

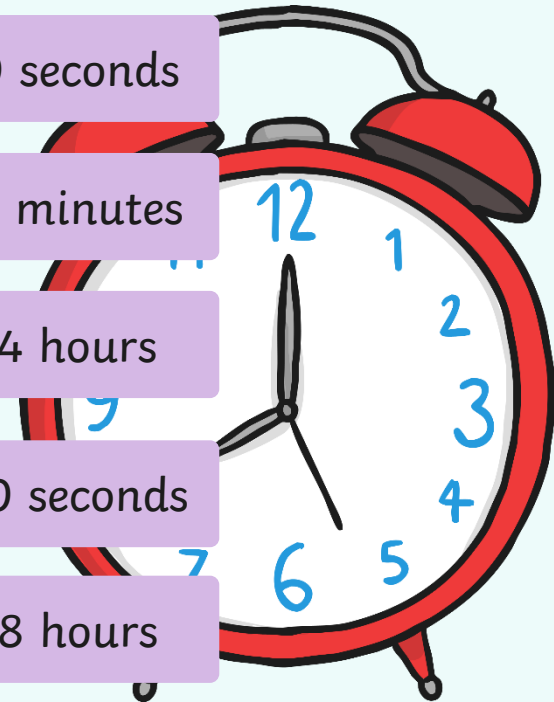
60 seconds

60 minutes

24 hours

120 seconds

48 hours



Hide
Answers

Worth What?

What is the **blue** number worth?

43

40

2**7**

7

99

90

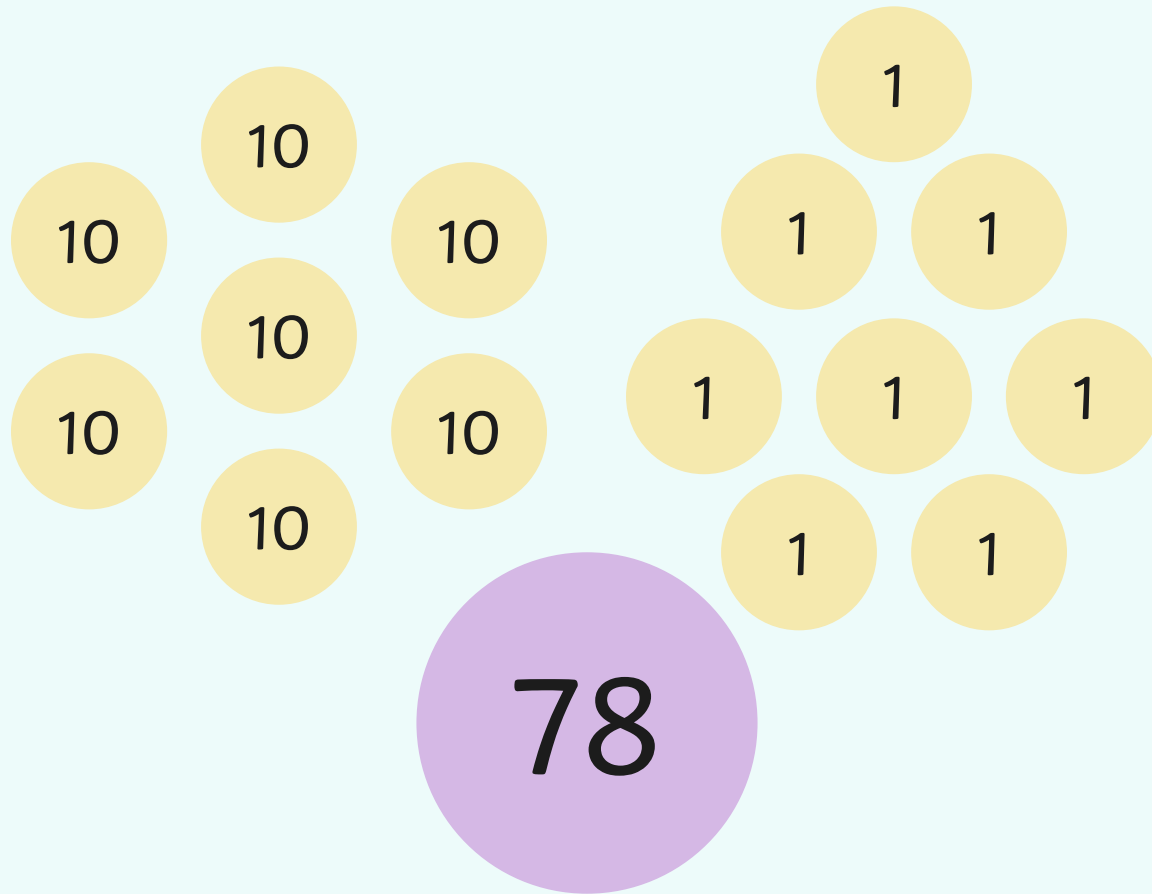
137

30

Hide
Answers

Represent

What is this number?



Hide
Answers

twinkl